



[Go to Product page](#)

Datasheet for ABIN653926  
**anti-ELOVL5 antibody (C-Term)**

2 Images

Overview

Quantity:	400 µL
Target:	ELOVL5
Binding Specificity:	AA 271-299, C-Term
Reactivity:	Human
Host:	Rabbit
Clonality:	Polyclonal
Conjugate:	This ELOVL5 antibody is un-conjugated
Application:	Western Blotting (WB), Flow Cytometry (FACS)

Product Details

Immunogen:	This ELOVL5 antibody is generated from rabbits immunized with a KLH conjugated synthetic peptide between 271-299 amino acids from the C-terminal region of human ELOVL5.
Clone:	RB23876
Isotype:	Ig Fraction
Predicted Reactivity:	Pr
Purification:	This antibody is purified through a protein A column, followed by peptide affinity purification.

Target Details

Target:	ELOVL5
Alternative Name:	ELOVL5 ( <a href="#">ELOVL5 Products</a> )

## Target Details

---

Background: ELOVL5 plays a role in elongation of long-chain polyunsaturated fatty acids.

Molecular Weight: 35293

Gene ID: 60481

NCBI Accession: [NP\\_001229757](#), [NP\\_001229759](#), [NP\\_001229760](#), [NP\\_068586](#)

UniProt: [Q9NYP7](#)

## Application Details

---

Application Notes: WB: 1:1000. FC: 1:10~50

Restrictions: For Research Use only

## Handling

---

Format: Liquid

Buffer: Purified polyclonal antibody supplied in PBS with 0.09 % (W/V) sodium azide.

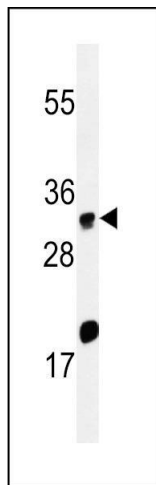
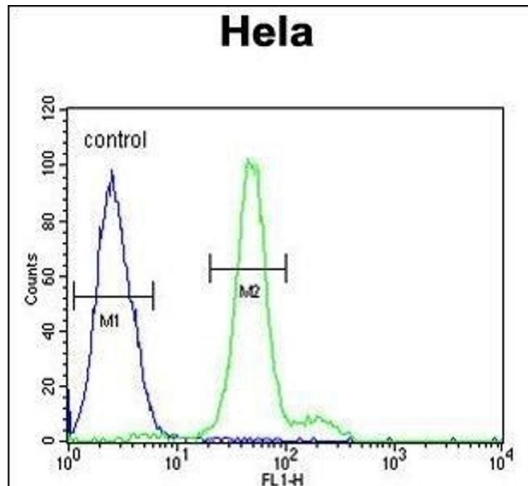
Preservative: Sodium azide

Precaution of Use: This product contains Sodium azide: a POISONOUS AND HAZARDOUS SUBSTANCE which should be handled by trained staff only.

Storage: 4 °C, -20 °C

Storage Comment: Maintain refrigerated at 2-8 °C for up to 6 months. For long term storage store at -20 °C in small aliquots to prevent freeze-thaw cycles.

Expiry Date: 6 months



### Flow Cytometry

**Image 1.** ELOVL5 Antibody (C-term) (ABIN653926 and ABIN2843160) flow cytometric analysis of HeLa cells (right histogram) compared to a negative control cell (left histogram). FITC-conjugated goat-anti-rabbit secondary antibodies were used for the analysis.

### Western Blotting

**Image 2.** Western blot analysis of ELOVL5 Antibody (C-term) (ABIN653926 and ABIN2843160) in HeLa cell line lysates (35 µg/lane). ELOVL5 (arrow) was detected using the purified Pab.