

Datasheet for ABIN653932
anti-METTL17 antibody (N-Term)

3 Images

[Go to Product page](#)

Overview

Quantity:	400 µL
Target:	METTL17
Binding Specificity:	AA 88-116, N-Term
Reactivity:	Human
Host:	Rabbit
Clonality:	Polyclonal
Conjugate:	This METTL17 antibody is un-conjugated
Application:	Western Blotting (WB), Flow Cytometry (FACS), Immunohistochemistry (Paraffin-embedded Sections) (IHC (p))

Product Details

Immunogen:	This M11D1 antibody is generated from rabbits immunized with a KLH conjugated synthetic peptide between 88-116 amino acids from the N-terminal region of human M11D1.
Clone:	RB25675
Isotype:	Ig Fraction
Purification:	This antibody is purified through a protein A column, followed by peptide affinity purification.

Target Details

Target:	METTL17
Alternative Name:	M11D1 (METTL17 Products)

Target Details

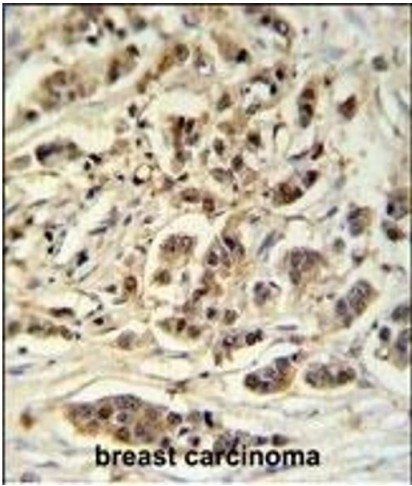
Background:	M11D1 may be a component of the mitochondrial small ribosomal subunit.
Molecular Weight:	50734
Gene ID:	64745
NCBI Accession:	NP_001025162 , NP_073571
UniProt:	Q9H7H0

Application Details

Application Notes:	WB: 1:1000. IHC-P: 1:50~100. FC: 1:10~50
Restrictions:	For Research Use only

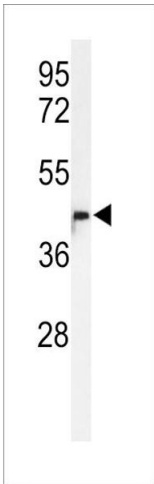
Handling

Format:	Liquid
Buffer:	Purified polyclonal antibody supplied in PBS with 0.09 % (W/V) sodium azide.
Preservative:	Sodium azide
Precaution of Use:	This product contains Sodium azide: a POISONOUS AND HAZARDOUS SUBSTANCE which should be handled by trained staff only.
Storage:	4 °C, -20 °C
Storage Comment:	Maintain refrigerated at 2-8 °C for up to 6 months. For long term storage store at -20 °C in small aliquots to prevent freeze-thaw cycles.
Expiry Date:	6 months



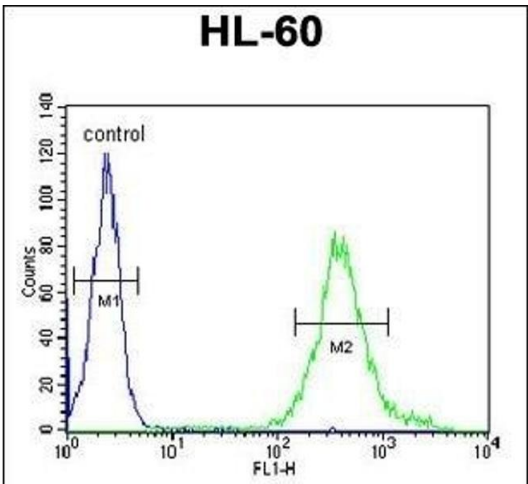
Immunohistochemistry (Paraffin-embedded Sections)

Image 1. M11D1 Antibody (N-term) (ABIN653932 and ABIN2843164) IHC analysis in formalin fixed and paraffin embedded breast carcinoma followed by peroxidase conjugation of the secondary antibody and DAB staining. This data demonstrates the use of the M11D1 Antibody (N-term) for immunohistochemistry. Clinical relevance has not been evaluated.



Western Blotting

Image 2. Western blot analysis of M11D1 Antibody (N-term) (ABIN653932 and ABIN2843164) in HL-60 cell line lysates (35 µg/lane). M11D1 (arrow) was detected using the purified Fab.



Flow Cytometry

Image 3. M11D1 Antibody (N-term) (ABIN653932 and ABIN2843164) flow cytometric analysis of HL-60 cells (right histogram) compared to a negative control cell (left histogram). FITC-conjugated goat-anti-rabbit secondary antibodies were used for the analysis.