

Datasheet for ABIN653937  
**anti-RHBG antibody (C-Term)**

## 3 Images

[Go to Product page](#)

## Overview

Quantity:	400 µL
Target:	RHBG
Binding Specificity:	AA 423-450, C-Term
Reactivity:	Human
Host:	Rabbit
Clonality:	Polyclonal
Conjugate:	This RHBG antibody is un-conjugated
Application:	Western Blotting (WB), Flow Cytometry (FACS), Immunohistochemistry (Paraffin-embedded Sections) (IHC (p))

## Product Details

Immunogen:	This RHBG antibody is generated from rabbits immunized with a KLH conjugated synthetic peptide between 423-450 amino acids from the C-terminal region of human RHBG.
Clone:	RB24663
Isotype:	Ig Fraction
Purification:	This antibody is purified through a protein A column, followed by peptide affinity purification.

## Target Details

Target:	RHBG
Abstract:	<a href="#">RHBG Products</a>

## Target Details

**Background:** RHBG encodes one of two non-erythroid members of the Rhesus (Rh) protein family. Non-erythroid Rh protein family members are mainly expressed in the kidney and belong to the methylammonium-ammonium permease/ammonia transporters superfamily. All Rh family proteins are predicted to be transmembrane proteins with 12 membrane spanning domains and intracytoplasmic N- and C-termini.

**Molecular Weight:** 47231

**Gene ID:** 57127

**NCBI Accession:** [NP\\_001243324](#), [NP\\_001243325](#), [NP\\_065140](#)

**UniProt:** [Q9H310](#)

## Application Details

**Application Notes:** WB: 1:1000. IHC-P: 1:50~100. FC: 1:10~50

**Restrictions:** For Research Use only

## Handling

**Format:** Liquid

**Buffer:** Purified polyclonal antibody supplied in PBS with 0.09 % (W/V) sodium azide.

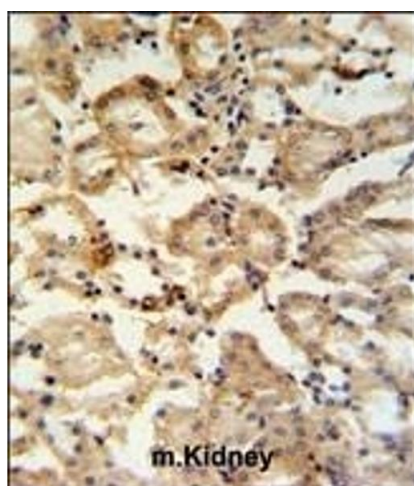
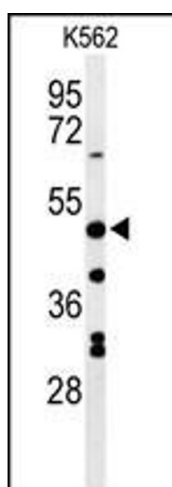
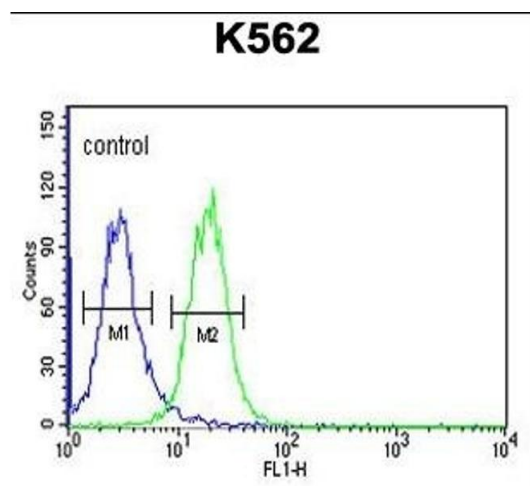
**Preservative:** Sodium azide

**Precaution of Use:** This product contains Sodium azide: a POISONOUS AND HAZARDOUS SUBSTANCE which should be handled by trained staff only.

**Storage:** 4 °C,-20 °C

**Storage Comment:** Maintain refrigerated at 2-8 °C for up to 6 months. For long term storage store at -20 °C in small aliquots to prevent freeze-thaw cycles.

**Expiry Date:** 6 months



### Flow Cytometry

**Image 1.** RHBG Antibody (C-term) (ABIN653937 and ABIN2843168) flow cytometric analysis of K562 cells (right histogram) compared to a negative control cell (left histogram). FITC-conjugated goat-anti-rabbit secondary antibodies were used for the analysis.

### Western Blotting

**Image 2.** Western blot analysis of RHBG Antibody (C-term) (ABIN653937 and ABIN2843168) in K562 cell line lysates (35 µg/lane). RHBG (arrow) was detected using the purified Pab.

### Immunohistochemistry (Paraffin-embedded Sections)

**Image 3.** RHBG Antibody (C-term) (ABIN653937 and ABIN2843168) IHC analysis in formalin fixed and paraffin embedded mouse kidney tissue followed by peroxidase conjugation of the secondary antibody and DAB staining. This data demonstrates the use of the RHBG Antibody (C-term) for immunohistochemistry. Clinical relevance has not been evaluated.