

Datasheet for ABIN653951
anti-IMMP2L antibody (AA 81-109)[Go to Product page](#)

3 Images

Overview

Quantity:	400 µL
Target:	IMMP2L
Binding Specificity:	AA 81-109
Reactivity:	Human
Host:	Rabbit
Clonality:	Polyclonal
Conjugate:	This IMMP2L antibody is un-conjugated
Application:	Western Blotting (WB), Flow Cytometry (FACS), Immunohistochemistry (Paraffin-embedded Sections) (IHC (p))

Product Details

Immunogen:	This IMP2L antibody is generated from rabbits immunized with a KLH conjugated synthetic peptide between 81-109 amino acids from the Central region of human IMP2L.
Clone:	RB24741
Isotype:	Ig Fraction
Predicted Reactivity:	M
Purification:	This antibody is purified through a protein A column, followed by peptide affinity purification.

Target Details

Target:	IMMP2L
---------	--------

Target Details

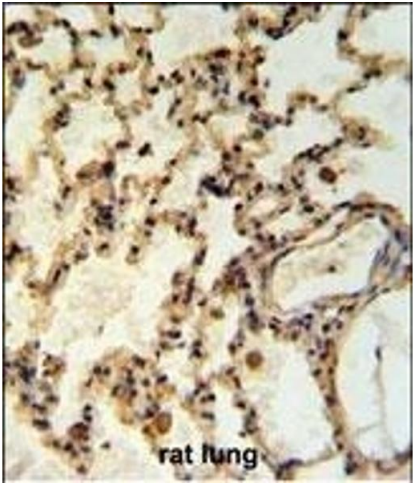
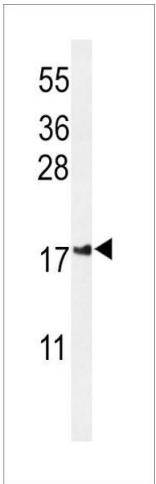
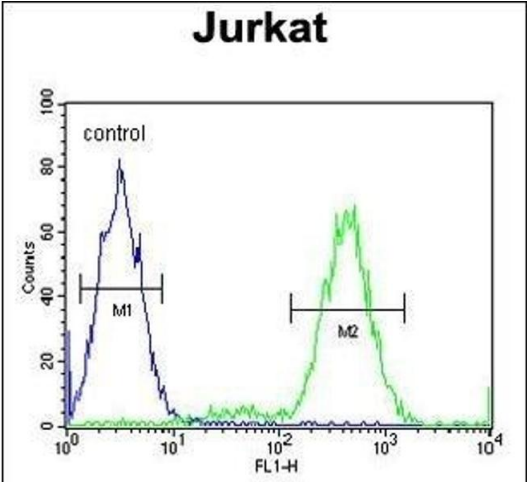
Alternative Name:	IMP2L (IMMP2L Products)
Background:	IMP2L complex generates mature, active proteins in the mitochondrial intermembrane space by proteolytically removing the mitochondrial targeting presequence of nuclear-encoded proteins. IMP1 (IMMP1L, MIM 612323) and IMP2 are the catalytic subunits of the IMP complex.
Molecular Weight:	19718
Gene ID:	83943
NCBI Accession:	NP_001231535 , NP_115938
UniProt:	Q96T52

Application Details

Application Notes:	WB: 1:1000. IHC-P: 1:50~100. FC: 1:10~50
Restrictions:	For Research Use only

Handling

Format:	Liquid
Buffer:	Purified polyclonal antibody supplied in PBS with 0.09 % (W/V) sodium azide.
Preservative:	Sodium azide
Precaution of Use:	This product contains Sodium azide: a POISONOUS AND HAZARDOUS SUBSTANCE which should be handled by trained staff only.
Storage:	4 °C,-20 °C
Storage Comment:	Maintain refrigerated at 2-8 °C for up to 6 months. For long term storage store at -20 °C in small aliquots to prevent freeze-thaw cycles.
Expiry Date:	6 months



Flow Cytometry

Image 1. IL Antibody (Center) (ABIN653951 and ABIN2843173) flow cytometric analysis of Jurkat cells (right histogram) compared to a negative control cell (left histogram). FITC-conjugated goat-anti-rabbit secondary antibodies were used for the analysis.

Western Blotting

Image 2. Western blot analysis of IL Antibody (Center) (ABIN653951 and ABIN2843173) in Jurkat cell line lysates (35 µg/lane). IL (arrow) was detected using the purified Pab.

Immunohistochemistry (Paraffin-embedded Sections)

Image 3. IL Antibody (Center) (ABIN653951 and ABIN2843173) IHC analysis in formalin fixed and paraffin embedded rat lung tissue followed by peroxidase conjugation of the secondary antibody and DAB staining. This data demonstrates the use of the IL Antibody (Center) for immunohistochemistry. Clinical relevance has not been evaluated.