

Datasheet for ABIN653953  
**anti-SMAD3 antibody (AA 186-215)**

4 Images

2 Publications

[Go to Product page](#)

## Overview

Quantity:	400 µL
Target:	SMAD3
Binding Specificity:	AA 186-215
Reactivity:	Human, Mouse
Host:	Rabbit
Clonality:	Polyclonal
Conjugate:	This SMAD3 antibody is un-conjugated
Application:	Western Blotting (WB), Immunohistochemistry (Paraffin-embedded Sections) (IHC (p)), Immunofluorescence (IF), Flow Cytometry (FACS)

## Product Details

Immunogen:	This SMAD3 antibody is generated from rabbits immunized with a KLH conjugated synthetic peptide between 186-215 amino acids from human SMAD3.
Clone:	RB24758
Isotype:	Ig Fraction
Predicted Reactivity:	C, Pig, Rat
Purification:	This antibody is purified through a protein A column, followed by peptide affinity purification.

## Target Details

Target:	SMAD3
---------	-------

## Target Details

Alternative Name:	SMAD3 ( <a href="#">SMAD3 Products</a> )
Background:	SMAD3 belongs to the SMAD, a family of proteins similar to the gene products of the Drosophila gene 'mothers against decapentaplegic' (Mad) and the C. elegans gene Sma. SMAD proteins are signal transducers and transcriptional modulators that mediate multiple signaling pathways. This protein functions as a transcriptional modulator activated by transforming growth factor-beta and is thought to play a role in the regulation of carcinogenesis.
Molecular Weight:	48081
Gene ID:	4088
NCBI Accession:	<a href="#">NP_001138574</a> , <a href="#">NP_001138575</a> , <a href="#">NP_001138576</a> , <a href="#">NP_005893</a>
UniProt:	<a href="#">P84022</a>
Pathways:	<a href="#">Cell Division Cycle</a> , <a href="#">Chromatin Binding</a> , <a href="#">Cell-Cell Junction Organization</a> , <a href="#">Positive Regulation of Endopeptidase Activity</a> , <a href="#">Autophagy</a>

## Application Details

Application Notes:	IF: 1:10~50. WB: 1:1000. IHC-P: 1:10~50. FC: 1:10~50
Restrictions:	For Research Use only

## Handling

Format:	Liquid
Buffer:	Purified polyclonal antibody supplied in PBS with 0.09 % (W/V) sodium azide.
Preservative:	Sodium azide
Precaution of Use:	This product contains Sodium azide: a POISONOUS AND HAZARDOUS SUBSTANCE which should be handled by trained staff only.
Storage:	4 °C,-20 °C
Storage Comment:	Maintain refrigerated at 2-8 °C for up to 6 months. For long term storage store at -20 °C in small aliquots to prevent freeze-thaw cycles.
Expiry Date:	6 months

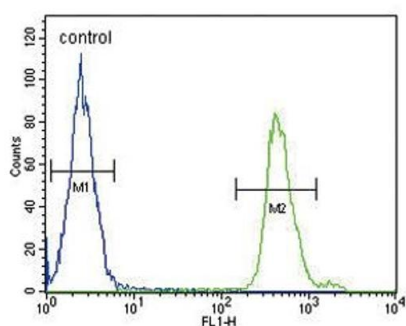
## Publications

Product cited in:	Zhou, Liu, Pan, Du, Li, Ma, Yao, Li, Liu: "The let-7g microRNA promotes follicular granulosa cell
-------------------	---

apoptosis by targeting transforming growth factor- $\beta$  type 1 receptor." in: **Molecular and cellular endocrinology**, Vol. 409, pp. 103-12, (2015) ([PubMed](#)).

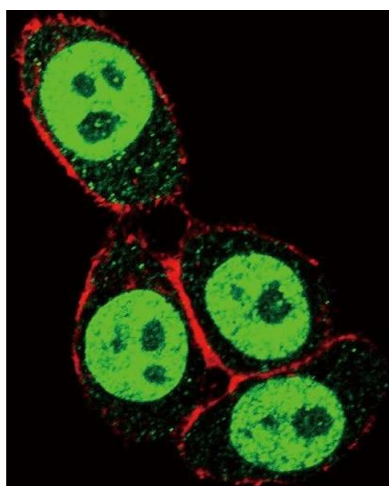
Lessard, Rivas, Alves-Wagner, Hirshman, Gallagher, Constantin-Teodosiu, Atkins, Greenhaff, Qi, Gustafsson, Fielding, Timmons, Britton, Koch, Goodyear: "Resistance to aerobic exercise training causes metabolic dysfunction and reveals novel exercise-regulated signaling networks." in: **Diabetes**, Vol. 62, Issue 8, pp. 2717-27, (2013) ([PubMed](#)).

## Images



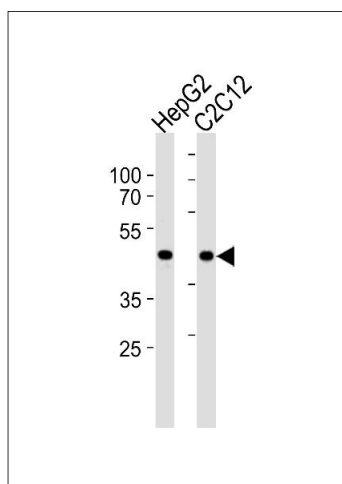
### Flow Cytometry

**Image 1.** SD3- Antibody (ABIN653953 and ABIN2843175) flow cytometric analysis of MDA-M cells (right histogram) compared to a negative control cell (left histogram). FITC-conjugated goat-anti-rabbit secondary antibodies were used for the analysis.



### Immunofluorescence

**Image 2.** Confocal immunofluorescent analysis of SD3-Antibody (ABIN653953 and ABIN2843175) with Hela cells followed by Alexa Fluor 488-conjugated goat anti-rabbit IgG (green). Actin filaments have been labeled with Alexa Fluor 555 phalloidin (red).



### Western Blotting

**Image 3.** SD3 Antibody (ABIN653953 and ABIN2843175) western blot analysis in HepG2 and mouse C2C12 cell line lysates (35 µg/lane). This demonstrates the SD3 antibody detected the SD3 protein (arrow).

Please check the [product details page](#) for more images. Overall 4 images are available for ABIN653953.