

Datasheet for ABIN653958  
**anti-C15ORF39 antibody (C-Term)**



[Go to Product page](#)

2 Images

Overview

Quantity:	400 µL
Target:	C15ORF39
Binding Specificity:	AA 938-967, C-Term
Reactivity:	Human
Host:	Rabbit
Clonality:	Polyclonal
Conjugate:	This C15ORF39 antibody is un-conjugated
Application:	Western Blotting (WB), Flow Cytometry (FACS)

Product Details

Immunogen:	This C0039 antibody is generated from rabbits immunized with a KLH conjugated synthetic peptide between 938-967 amino acids from the C-terminal region of human C0039.
Clone:	RB27540
Isotype:	Ig Fraction
Purification:	This antibody is purified through a protein A column, followed by peptide affinity purification.

Target Details

Target:	C15ORF39
Alternative Name:	C0039 ( <a href="#">C15ORF39 Products</a> )
Molecular Weight:	110673

## Target Details

Gene ID: 56905

NCBI Accession: [NP\\_056307](#)

UniProt: [Q6ZRI6](#)

## Application Details

Application Notes: WB: 1:1000. FC: 1:10~50

Restrictions: For Research Use only

## Handling

Format: Liquid

Buffer: Purified polyclonal antibody supplied in PBS with 0.09 % (W/V) sodium azide.

Preservative: Sodium azide

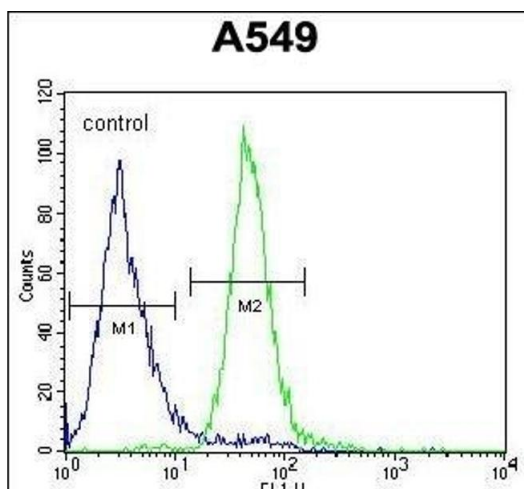
Precaution of Use: This product contains Sodium azide: a POISONOUS AND HAZARDOUS SUBSTANCE which should be handled by trained staff only.

Storage: 4 °C, -20 °C

Storage Comment: Maintain refrigerated at 2-8 °C for up to 6 months. For long term storage store at -20 °C in small aliquots to prevent freeze-thaw cycles.

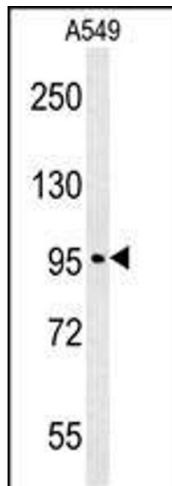
Expiry Date: 6 months

## Images



### Flow Cytometry

**Image 1.** C Antibody (C-term) (ABIN653958 and ABIN2843915) flow cytometric analysis of A549 cells (right histogram) compared to a negative control cell (left histogram). FITC-conjugated goat-anti-rabbit secondary antibodies were used for the analysis.



### Western Blotting

**Image 2.** C Antibody (C-term) (ABIN653958 and ABIN2843915) western blot analysis in A549 cell line lysates (35 µg/lane). This demonstrates the C antibody detected the C protein (arrow).