



[Go to Product page](#)

Datasheet for ABIN653968

anti-POTEE antibody (AA 380-409)

4 Images

Overview

Quantity:	400 µL
Target:	POTEE
Binding Specificity:	AA 380-409
Reactivity:	Human
Host:	Rabbit
Clonality:	Polyclonal
Conjugate:	This POTEE antibody is un-conjugated
Application:	Western Blotting (WB), Flow Cytometry (FACS)

Product Details

Immunogen:	This POTEE antibody is generated from rabbits immunized with a KLH conjugated synthetic peptide between 380-409 amino acids from the Central region of human POTEE.
Clone:	RB27557
Isotype:	IgG
Purification:	This antibody is purified through a protein A column, followed by peptide affinity purification.

Target Details

Target:	POTEE
Alternative Name:	POTEE (POTEE Products)
Molecular Weight:	121363

Target Details

Gene ID: 445582

NCBI Accession: [NP_001077007](#)

UniProt: [Q6S8J3](#)

Application Details

Application Notes: WB: 1:1000. WB: 1:1000. FC: 1:25. FC: 1:25

Restrictions: For Research Use only

Handling

Format: Liquid

Buffer: Purified polyclonal antibody supplied in PBS with 0.09 % (W/V) sodium azide.

Preservative: Sodium azide

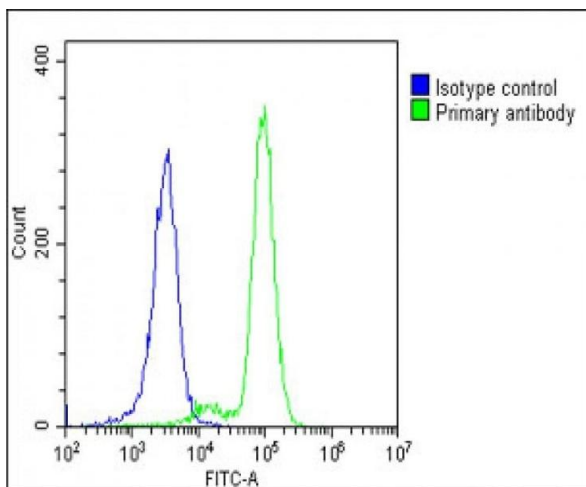
Precaution of Use: This product contains Sodium azide: a POISONOUS AND HAZARDOUS SUBSTANCE which should be handled by trained staff only.

Storage: 4 °C,-20 °C

Storage Comment: Maintain refrigerated at 2-8 °C for up to 6 months. For long term storage store at -20 °C in small aliquots to prevent freeze-thaw cycles.

Expiry Date: 6 months

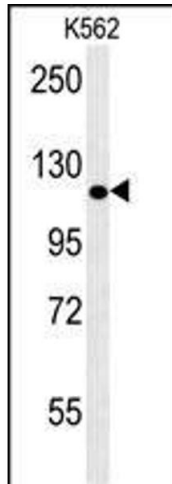
Images



Flow Cytometry

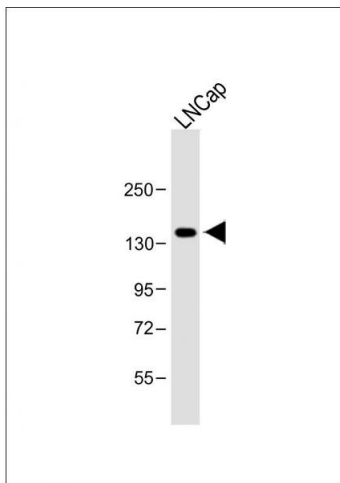
Image 1. Overlay histogram showing K562 cells stained with (ABIN653968 and ABIN2843918)(green line). The cells were fixed with 2 % paraformaldehyde (10 min) and then permeabilized with 90 % methanol for 10 min. The cells were then incubated in 2 % bovine serum albumin to block non-specific protein-protein interactions followed by the antibody ((ABIN653968 and ABIN2843918), 1:25 dilution) for 60 min at 37 °C. The secondary antibody used was Goat Anti-Rabbit IgG, DyLight® 488 Conjugated Highly Cross-

Adsorbed(1583138) at 1/200 dilution for 40 min at 37 °C. Isotype control antibody (blue line) was rabbit IgG1 (1 μg/1x10⁶ cells) used under the same conditions. Acquisition of >10,000 events was performed.



Western Blotting

Image 2. POTEE Antibody (Center) (ABIN653968 and ABIN2843918) western blot analysis in K562 cell line lysates (35 μg/lane). This demonstrates the POTEE antibody detected the POTEE protein (arrow).



Western Blotting

Image 3. Anti-POTEE Antibody (Center) at 1:1000 dilution + LNCap whole cell lysate Lysates/proteins at 20 μg per lane. Secondary Goat Anti-Rabbit IgG, (H+L), Peroxidase conjugated at 1/10000 dilution. Predicted band size : 121 kDa Blocking/Dilution buffer: 5 % NFDm/TBST.

Please check the [product details page](#) for more images. Overall 4 images are available for ABIN653968.