

Datasheet for ABIN653969  
**anti-TMEM132D antibody (C-Term)**[Go to Product page](#)

## 2 Images

## Overview

Quantity:	400 µL
Target:	TMEM132D
Binding Specificity:	AA 805-833, C-Term
Reactivity:	Human
Host:	Rabbit
Clonality:	Polyclonal
Conjugate:	This TMEM132D antibody is un-conjugated
Application:	Western Blotting (WB), Flow Cytometry (FACS)

## Product Details

Immunogen:	This TMEM132D antibody is generated from rabbits immunized with a KLH conjugated synthetic peptide between 805-833 amino acids from the C-terminal region of human TMEM132D.
Clone:	RB27559
Isotype:	Ig Fraction
Purification:	This antibody is purified through a protein A column, followed by peptide affinity purification.

## Target Details

Target:	TMEM132D
Alternative Name:	TMEM132D ( <a href="#">TMEM132D Products</a> )

## Target Details

Molecular Weight:	122309
Gene ID:	121256
NCBI Accession:	<a href="#">NP_597705</a>
UniProt:	<a href="#">Q14C87</a>

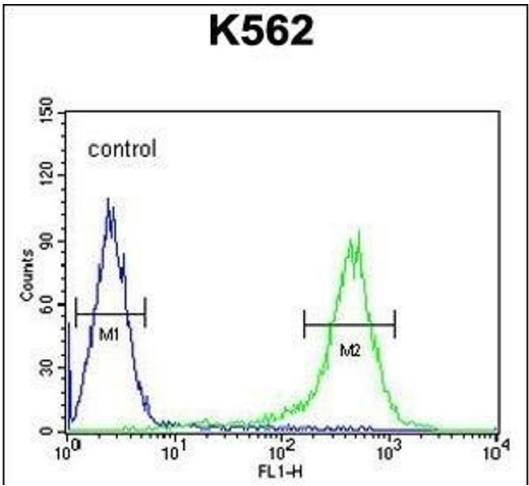
## Application Details

Application Notes:	WB: 1:1000. FC: 1:10~50
Restrictions:	For Research Use only

## Handling

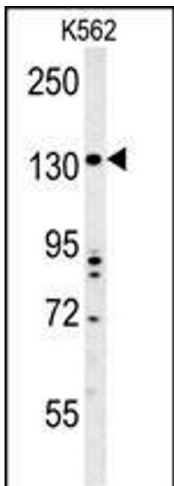
Format:	Liquid
Buffer:	Purified polyclonal antibody supplied in PBS with 0.09 % (W/V) sodium azide.
Preservative:	Sodium azide
Precaution of Use:	This product contains Sodium azide: a POISONOUS AND HAZARDOUS SUBSTANCE which should be handled by trained staff only.
Storage:	4 °C, -20 °C
Storage Comment:	Maintain refrigerated at 2-8 °C for up to 6 months. For long term storage store at -20 °C in small aliquots to prevent freeze-thaw cycles.
Expiry Date:	6 months

## Images



### Flow Cytometry

**Image 1.** TMEM132D Antibody (C-term) (ABIN653969 and ABIN2843919) flow cytometric analysis of K562 cells (right histogram) compared to a negative control cell (left histogram). FITC-conjugated goat-anti-rabbit secondary antibodies were used for the analysis.



Western Blotting

**Image 2.** TMEM132D Antibody (C-term) (ABIN653969 and ABIN2843919) western blot analysis in K562 cell line lysates (35 µg/lane). This demonstrates the TMEM132D antibody detected the TMEM132D protein (arrow).