

Datasheet for ABIN653972  
**anti-DPY19L2 antibody (C-Term)**[Go to Product page](#)

## 1 Image

## Overview

Quantity:	400 µL
Target:	DPY19L2
Binding Specificity:	AA 642-671, C-Term
Reactivity:	Human
Host:	Rabbit
Clonality:	Polyclonal
Conjugate:	This DPY19L2 antibody is un-conjugated
Application:	Western Blotting (WB)

## Product Details

Immunogen:	This DPY19L2 antibody is generated from rabbits immunized with a KLH conjugated synthetic peptide between 642-671 amino acids from the C-terminal region of human DPY19L2.
Clone:	RB27565
Isotype:	Ig Fraction
Predicted Reactivity:	M
Purification:	This antibody is purified through a protein A column, followed by peptide affinity purification.

## Target Details

Target:	DPY19L2
Alternative Name:	DPY19L2 ( <a href="#">DPY19L2 Products</a> )

## Target Details

Molecular Weight:	87374
Gene ID:	283417
NCBI Accession:	<a href="#">NP_776173</a>
UniProt:	<a href="#">Q6NUT2</a>

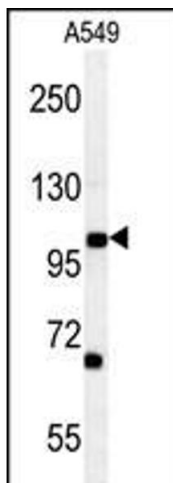
## Application Details

Application Notes:	WB: 1:1000
Restrictions:	For Research Use only

## Handling

Format:	Liquid
Buffer:	Purified polyclonal antibody supplied in PBS with 0.09 % (W/V) sodium azide.
Preservative:	Sodium azide
Precaution of Use:	This product contains Sodium azide: a POISONOUS AND HAZARDOUS SUBSTANCE which should be handled by trained staff only.
Storage:	4 °C, -20 °C
Storage Comment:	Maintain refrigerated at 2-8 °C for up to 6 months. For long term storage store at -20 °C in small aliquots to prevent freeze-thaw cycles.
Expiry Date:	6 months

## Images



### Western Blotting

**Image 1.** DPY19L2 Antibody (C-term) (ABIN653972 and ABIN2843920) western blot analysis in A549 cell line lysates (35 µg/lane). This demonstrates the DPY19L2 antibody detected the DPY19L2 protein (arrow).