

Datasheet for ABIN653975
anti-LCA5L antibody (C-Term)[Go to Product page](#)

2 Images

Overview

Quantity:	400 µL
Target:	LCA5L
Binding Specificity:	AA 380-408, C-Term
Reactivity:	Human, Mouse
Host:	Rabbit
Clonality:	Polyclonal
Conjugate:	This LCA5L antibody is un-conjugated
Application:	Western Blotting (WB), Immunohistochemistry (Paraffin-embedded Sections) (IHC (p))

Product Details

Immunogen:	This LCA5L antibody is generated from rabbits immunized with a KLH conjugated synthetic peptide between 380-408 amino acids from the C-terminal region of human LCA5L.
Clone:	RB27570
Isotype:	Ig Fraction
Purification:	This antibody is purified through a protein A column, followed by peptide affinity purification.

Target Details

Target:	LCA5L
Alternative Name:	LCA5L (LCA5L Products)
Molecular Weight:	76505

Target Details

Gene ID: 150082

NCBI Accession: [NP_689718](#)

UniProt: [O95447](#)

Application Details

Application Notes: WB: 1:1000. IHC-P: 1:50~100

Restrictions: For Research Use only

Handling

Format: Liquid

Buffer: Purified polyclonal antibody supplied in PBS with 0.09 % (W/V) sodium azide.

Preservative: Sodium azide

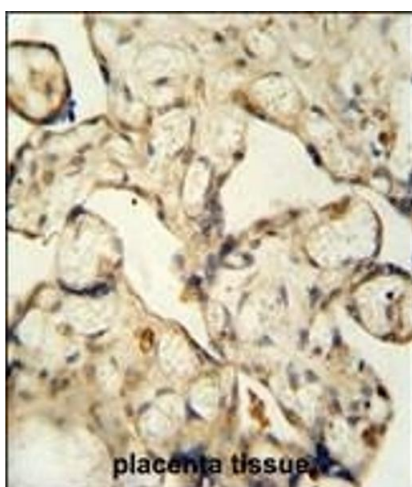
Precaution of Use: This product contains Sodium azide: a POISONOUS AND HAZARDOUS SUBSTANCE which should be handled by trained staff only.

Storage: 4 °C,-20 °C

Storage Comment: Maintain refrigerated at 2-8 °C for up to 6 months. For long term storage store at -20 °C in small aliquots to prevent freeze-thaw cycles.

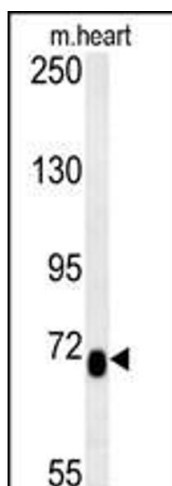
Expiry Date: 6 months

Images



Immunohistochemistry (Paraffin-embedded Sections)

Image 1. LCA5L antibody (C-term) (ABIN653975 and ABIN2843921) immunohistochemistry analysis in formalin fixed and paraffin embedded human placenta tissue followed by peroxidase conjugation of the secondary antibody and DAB staining. This data demonstrates the use of the LCA5L antibody (C-term) for immunohistochemistry. Clinical relevance has not been evaluated.



Western Blotting

Image 2. LCA5L Antibody (C-term) (ABIN653975 and ABIN2843921) western blot analysis in mouse heart tissue lysates (15 µg/lane). This demonstrates the LCA5L antibody detected LCA5L protein (arrow).