



[Go to Product page](#)

Datasheet for ABIN653980

anti-CCSER1 antibody (C-Term)

2 Images

Overview

Quantity:	400 µL
Target:	CCSER1
Binding Specificity:	AA 780-808, C-Term
Reactivity:	Human
Host:	Rabbit
Clonality:	Polyclonal
Conjugate:	This CCSER1 antibody is un-conjugated
Application:	Western Blotting (WB), Immunohistochemistry (Paraffin-embedded Sections) (IHC (p))

Product Details

Immunogen:	This KIAA1680 antibody is generated from rabbits immunized with a KLH conjugated synthetic peptide between 780-808 amino acids from the C-terminal region of human KIAA1680.
Clone:	RB27586
Isotype:	Ig Fraction
Purification:	This antibody is purified through a protein A column, followed by peptide affinity purification.

Target Details

Target:	CCSER1
Alternative Name:	KIAA1680 (CCSER1 Products)
Molecular Weight:	99510

Target Details

Gene ID:	401145
NCBI Accession:	NP_001138537 , NP_997374
UniProt:	Q9C0I3

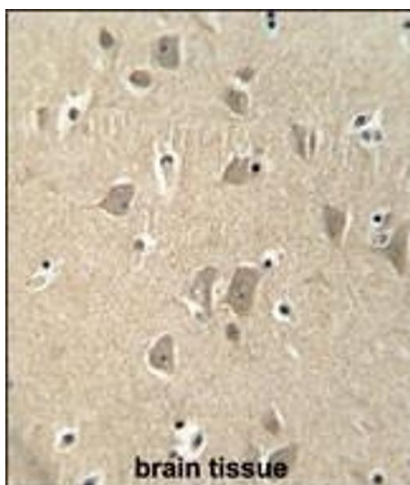
Application Details

Application Notes:	WB: 1:1000. IHC-P: 1:50~100
Restrictions:	For Research Use only

Handling

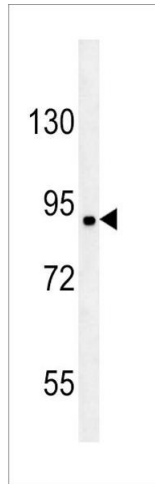
Format:	Liquid
Buffer:	Purified polyclonal antibody supplied in PBS with 0.09 % (W/V) sodium azide.
Preservative:	Sodium azide
Precaution of Use:	This product contains Sodium azide: a POISONOUS AND HAZARDOUS SUBSTANCE which should be handled by trained staff only.
Storage:	4 °C, -20 °C
Storage Comment:	Maintain refrigerated at 2-8 °C for up to 6 months. For long term storage store at -20 °C in small aliquots to prevent freeze-thaw cycles.
Expiry Date:	6 months

Images



Immunohistochemistry (Paraffin-embedded Sections)

Image 1. KI antibody (C-term) (ABIN653980 and ABIN2843926) immunohistochemistry analysis in formalin fixed and paraffin embedded human brain tissue followed by peroxidase conjugation of the secondary antibody and DAB staining. This data demonstrates the use of the KI antibody (C-term) for immunohistochemistry. Clinical relevance has not been evaluated.



Western Blotting

Image 2. KI Antibody (C-term) (ABIN653980 and ABIN2843926) western blot analysis in Jurkat cell line lysates (35 µg/lane). This demonstrates the KI antibody detected the KI protein (arrow).