



[Go to Product page](#)

Datasheet for ABIN653990

## anti-POTEB antibody (C-Term)

### 3 Images

#### Overview

Quantity:	400 µL
Target:	POTEB
Binding Specificity:	AA 381-410, C-Term
Reactivity:	Human
Host:	Rabbit
Clonality:	Polyclonal
Conjugate:	This POTEB antibody is un-conjugated
Application:	Western Blotting (WB), Flow Cytometry (FACS), Immunohistochemistry (Paraffin-embedded Sections) (IHC (p))

#### Product Details

Immunogen:	This POTEB antibody is generated from rabbits immunized with a KLH conjugated synthetic peptide between 381-410 amino acids from the C-terminal region of human POTEB.
Clone:	RB27621
Isotype:	Ig Fraction
Purification:	This antibody is purified through a protein A column, followed by peptide affinity purification.

#### Target Details

Target:	POTEB
Alternative Name:	POTEB ( <a href="#">POTEB Products</a> )

## Target Details

Gene ID: 339010

NCBI Accession: [NP\\_997238](#)

UniProt: [Q6S5H4](#)

## Application Details

Application Notes: WB: 1:2000. IHC-P: 1:50~100. FC: 1:10~50

Restrictions: For Research Use only

## Handling

Format: Liquid

Buffer: Purified polyclonal antibody supplied in PBS with 0.09 % (W/V) sodium azide.

Preservative: Sodium azide

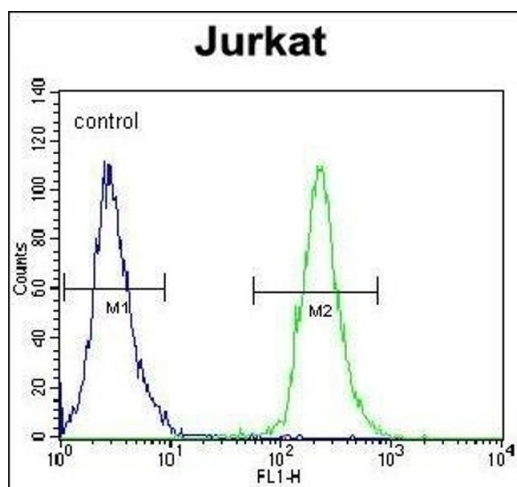
Precaution of Use: This product contains Sodium azide: a POISONOUS AND HAZARDOUS SUBSTANCE which should be handled by trained staff only.

Storage: 4 °C, -20 °C

Storage Comment: Maintain refrigerated at 2-8 °C for up to 6 months. For long term storage store at -20 °C in small aliquots to prevent freeze-thaw cycles.

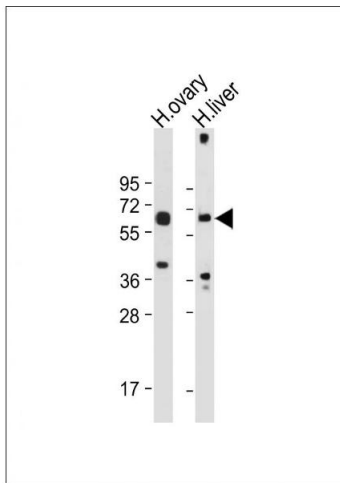
Expiry Date: 6 months

## Images



### Flow Cytometry

**Image 1.** POTE B Antibody (C-term) (ABIN653990 and ABIN2843930) flow cytometric analysis of Jurkat cells (right histogram) compared to a negative control cell (left histogram). FITC-conjugated goat-anti-rabbit secondary antibodies were used for the analysis.



### Western Blotting

**Image 2.** All lanes : Anti-POTEB Antibody (C-term) at 1:2000 dilution Lane 1: Human ovary tissue lysate Lane 2: Human liver tissue lysate Lysates/proteins at 20 µg per lane. Secondary Goat Anti-Rabbit IgG, (H+L), Peroxidase conjugated at 1/10000 dilution. Predicted band size : 66 kDa Blocking/Dilution buffer: 5 % NFDN/TBST.



### Immunohistochemistry (Paraffin-embedded Sections)

**Image 3.** POTEB antibody (C-term) (ABIN653990 and ABIN2843930) immunohistochemistry analysis in formalin fixed and paraffin embedded human prostate carcinoma followed by peroxidase conjugation of the secondary antibody and DAB staining. This data demonstrates the use of the POTEB antibody (C-term) for immunohistochemistry. Clinical relevance has not been evaluated.