



[Go to Product page](#)

Datasheet for ABIN653995

## anti-CLEC12A antibody (AA 178-206)

### 1 Image

#### Overview

|                      |  |
|----------------------|--|
| Quantity:            | 400 µL                                 |
| Target:              | CLEC12A                                |
| Binding Specificity: | AA 178-206                             |
| Reactivity:          | Human                                  |
| Host:                | Rabbit                                 |
| Clonality:           | Polyclonal                             |
| Conjugate:           | This CLEC12A antibody is un-conjugated |
| Application:         | Western Blotting (WB)                  |

#### Product Details

|               |   |
|---------------|---|
| Immunogen:    | This CLEC12A antibody is generated from rabbits immunized with a KLH conjugated synthetic peptide between 178-206 amino acids from the Central region of human CLEC12A. |
| Clone:        | RB27646   |
| Isotype:      | Ig Fraction   |
| Purification: | This antibody is purified through a protein A column, followed by peptide affinity purification.  |

#### Target Details

|                   |  |
|-------------------|--|
| Target:           | CLEC12A                                      |
| Alternative Name: | CLEC12A ( <a href="#">CLEC12A Products</a> ) |
| Molecular Weight: | 30762  |

## Target Details

|                 |  |
|-----------------|--|
| Gene ID:        | 160364   |
| NCBI Accession: | <a href="#">NP_001193939</a> , <a href="#">NP_612210</a> , <a href="#">NP_963917</a> |
| UniProt:        | <a href="#">Q5QGZ9</a>   |

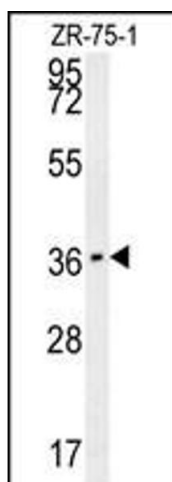
## Application Details

|                    |                       |
|--------------------|-----------------------|
| Application Notes: | WB: 1:1000            |
| Restrictions:      | For Research Use only |

## Handling

|                    |  |
|--------------------|--|
| Format:            | Liquid   |
| Buffer:            | Purified polyclonal antibody supplied in PBS with 0.09 % (W/V) sodium azide.   |
| Preservative:      | Sodium azide   |
| Precaution of Use: | This product contains Sodium azide: a POISONOUS AND HAZARDOUS SUBSTANCE which should be handled by trained staff only. |
| Handling Advice:   | Avoid freeze-thaw cycles.  |
| Storage:           | 4 °C, -20 °C   |
| Storage Comment:   | Maintain refrigerated at 2-8 °C for up to 6 months. For long term storage store at -20 °C in small aliquots.           |
| Expiry Date:       | 6 months   |

## Images



### Western Blotting

**Image 1.** CLEC12A Antibody (Center) (ABIN653995 and ABIN2843932) western blot analysis in ZR-75-1 cell line lysates (35 µg/lane). This demonstrates the CLEC12A antibody detected the CLEC12A protein (arrow).