

Datasheet for ABIN653998
anti-MCEE antibody (C-Term)[Go to Product page](#)

2 Images

Overview

Quantity:	400 µL
Target:	MCEE
Binding Specificity:	AA 128-156, C-Term
Reactivity:	Human, Mouse
Host:	Rabbit
Clonality:	Polyclonal
Conjugate:	This MCEE antibody is un-conjugated
Application:	Western Blotting (WB), Immunohistochemistry (Paraffin-embedded Sections) (IHC (p))

Product Details

Immunogen:	This MCEE antibody is generated from rabbits immunized with a KLH conjugated synthetic peptide between 128-156 amino acids from the C-terminal region of human MCEE.
Clone:	RB27655
Isotype:	Ig Fraction
Purification:	This antibody is purified through a protein A column, followed by peptide affinity purification.

Target Details

Target:	MCEE
Alternative Name:	MCEE (MCEE Products)
Molecular Weight:	18749

Target Details

Gene ID:	84693
NCBI Accession:	NP_115990
UniProt:	Q96PE7
Pathways:	Monocarboxylic Acid Catabolic Process

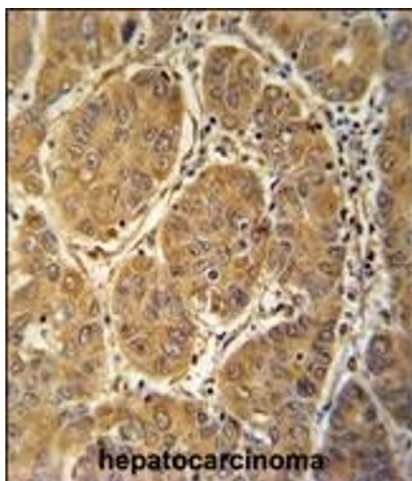
Application Details

Application Notes:	WB: 1:1000. IHC-P: 1:50~100
Restrictions:	For Research Use only

Handling

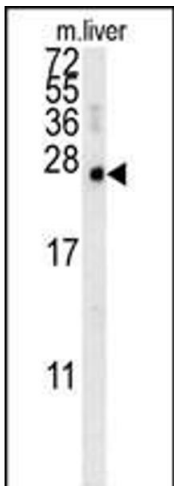
Format:	Liquid
Buffer:	Purified polyclonal antibody supplied in PBS with 0.09 % (W/V) sodium azide.
Preservative:	Sodium azide
Precaution of Use:	This product contains Sodium azide: a POISONOUS AND HAZARDOUS SUBSTANCE which should be handled by trained staff only.
Storage:	4 °C, -20 °C
Storage Comment:	Maintain refrigerated at 2-8 °C for up to 6 months. For long term storage store at -20 °C in small aliquots to prevent freeze-thaw cycles.
Expiry Date:	6 months

Images



Immunohistochemistry (Paraffin-embedded Sections)

Image 1. MCEE antibody (C-term) (ABIN653998 and ABIN2843935) immunohistochemistry analysis in formalin fixed and paraffin embedded human hepatocarcinoma followed by peroxidase conjugation of the secondary antibody and DAB staining. This data demonstrates the use of the MCEE antibody (C-term) for immunohistochemistry. Clinical relevance has not been evaluated.



Western Blotting

Image 2. MCEE Antibody (C-term) (ABIN653998 and ABIN2843935) western blot analysis in mouse liver tissue lysates (15 µg/lane). This demonstrates the MCEE antibody detected MCEE protein (arrow).