



[Go to Product page](#)

Datasheet for ABIN654013
anti-CHCHD2 antibody (AA 74-103)

3 Images

Overview

Quantity:	400 µL
Target:	CHCHD2
Binding Specificity:	AA 74-103
Reactivity:	Human
Host:	Rabbit
Clonality:	Polyclonal
Conjugate:	This CHCHD2 antibody is un-conjugated
Application:	Western Blotting (WB), Flow Cytometry (FACS), Immunohistochemistry (Paraffin-embedded Sections) (IHC (p))

Product Details

Immunogen:	This CHCHD2 antibody is generated from rabbits immunized with a KLH conjugated synthetic peptide between 74-103 amino acids from the Central region of human CHCHD2.
Clone:	RB27708
Isotype:	Ig Fraction
Purification:	This antibody is purified through a protein A column, followed by peptide affinity purification.

Target Details

Target:	CHCHD2
Alternative Name:	CHCHD2 (CHCHD2 Products)

Target Details

Molecular Weight:	15513
Gene ID:	51142
NCBI Accession:	NP_057223
UniProt:	Q9Y6H1

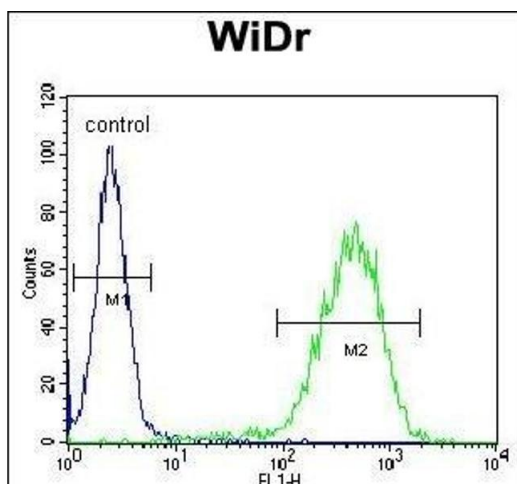
Application Details

Application Notes:	WB: 1:1000. IHC-P: 1:50~100. FC: 1:10~50
Restrictions:	For Research Use only

Handling

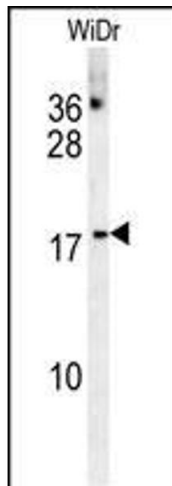
Format:	Liquid
Buffer:	Purified polyclonal antibody supplied in PBS with 0.09 % (W/V) sodium azide.
Preservative:	Sodium azide
Precaution of Use:	This product contains Sodium azide: a POISONOUS AND HAZARDOUS SUBSTANCE which should be handled by trained staff only.
Storage:	4 °C,-20 °C
Storage Comment:	Maintain refrigerated at 2-8 °C for up to 6 months. For long term storage store at -20 °C in small aliquots to prevent freeze-thaw cycles.
Expiry Date:	6 months

Images



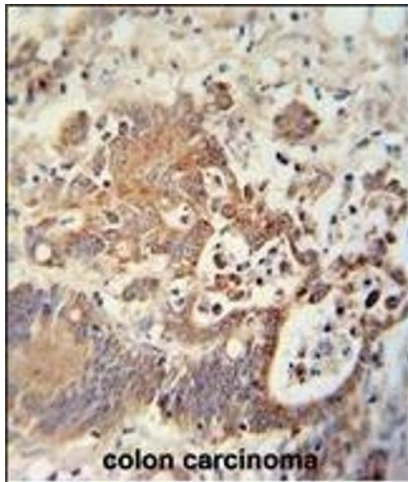
Flow Cytometry

Image 1. CHCHD2 Antibody (Center) (ABIN654013 and ABIN2843939) flow cytometric analysis of WiDr cells (right histogram) compared to a negative control cell (left histogram). FITC-conjugated goat-anti-rabbit secondary antibodies were used for the analysis.



Western Blotting

Image 2. CHCHD2 Antibody (Center) (ABIN654013 and ABIN2843939) western blot analysis in WiDr cell line lysates (35 µg/lane). This demonstrates the CHCHD2 antibody detected the CHCHD2 protein (arrow).



Immunohistochemistry (Paraffin-embedded Sections)

Image 3. CHCHD2 antibody (Center) (ABIN654013 and ABIN2843939) immunohistochemistry analysis in formalin fixed and paraffin embedded human colon carcinoma followed by peroxidase conjugation of the secondary antibody and DAB staining. This data demonstrates the use of the CHCHD2 antibody (Center) for immunohistochemistry. Clinical relevance has not been evaluated.