

Datasheet for ABIN654020  
**anti-SLC43A2 antibody (AA 236-265)**[Go to Product page](#)

## 2 Images

## Overview

Quantity:	400 µL
Target:	SLC43A2
Binding Specificity:	AA 236-265
Reactivity:	Human, Mouse
Host:	Rabbit
Clonality:	Polyclonal
Conjugate:	This SLC43A2 antibody is un-conjugated
Application:	Western Blotting (WB), Flow Cytometry (FACS)

## Product Details

Immunogen:	This SLC43A2 antibody is generated from rabbits immunized with a KLH conjugated synthetic peptide between 236-265 amino acids from the Central region of human SLC43A2.
Clone:	RB27716
Isotype:	Ig Fraction
Predicted Reactivity:	B
Purification:	This antibody is purified through a protein A column, followed by peptide affinity purification.

## Target Details

Target:	SLC43A2
Alternative Name:	SLC43A2 ( <a href="#">SLC43A2 Products</a> )

Target Details

Molecular Weight:	62747
Gene ID:	124935
NCBI Accession:	<a href="#">NP_689559</a>
UniProt:	<a href="#">Q8N370</a>

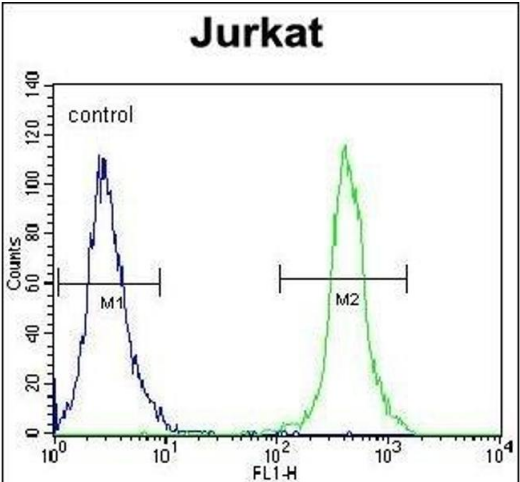
Application Details

Application Notes:	WB: 1:1000. FC: 1:10~50
Restrictions:	For Research Use only

Handling

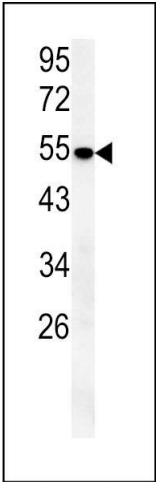
Format:	Liquid
Buffer:	Purified polyclonal antibody supplied in PBS with 0.09 % (W/V) sodium azide.
Preservative:	Sodium azide
Precaution of Use:	This product contains Sodium azide: a POISONOUS AND HAZARDOUS SUBSTANCE which should be handled by trained staff only.
Storage:	4 °C,-20 °C
Storage Comment:	Maintain refrigerated at 2-8 °C for up to 6 months. For long term storage store at -20 °C in small aliquots to prevent freeze-thaw cycles.
Expiry Date:	6 months

Images



**Flow Cytometry**

**Image 1.** SLC43A2 Antibody (Center) (ABIN654020 and ABIN2843943) flow cytometric analysis of Jurkat cells (right histogram) compared to a negative control cell (left histogram).FITC-conjugated goat-anti-rabbit secondary antibodies were used for the analysis.



Western Blotting

**Image 2.** SLC43A2 Antibody (Center) (ABIN654020 and ABIN2843943) western blot analysis in mouse lung tissue lysates (15 µg/lane). This demonstrates the SLC43A2 antibody detected SLC43A2 protein (arrow).