

Datasheet for ABIN654026
anti-TMEM214 antibody (N-Term)[Go to Product page](#)

3 Images

Overview

Quantity:	400 µL
Target:	TMEM214
Binding Specificity:	AA 38-66, N-Term
Reactivity:	Human
Host:	Rabbit
Clonality:	Polyclonal
Conjugate:	This TMEM214 antibody is un-conjugated
Application:	Western Blotting (WB), Flow Cytometry (FACS), Immunohistochemistry (Paraffin-embedded Sections) (IHC (p))

Product Details

Immunogen:	This TMEM214 antibody is generated from rabbits immunized with a KLH conjugated synthetic peptide between 38-66 amino acids from the N-terminal region of human TMEM214.
Clone:	RB27727
Isotype:	Ig Fraction
Purification:	This antibody is purified through a protein A column, followed by peptide affinity purification.

Target Details

Target:	TMEM214
Alternative Name:	TMEM214 (TMEM214 Products)

Target Details

Molecular Weight:	77151
Gene ID:	54867
NCBI Accession:	NP_001077059 , NP_060197
UniProt:	Q6NUQ4

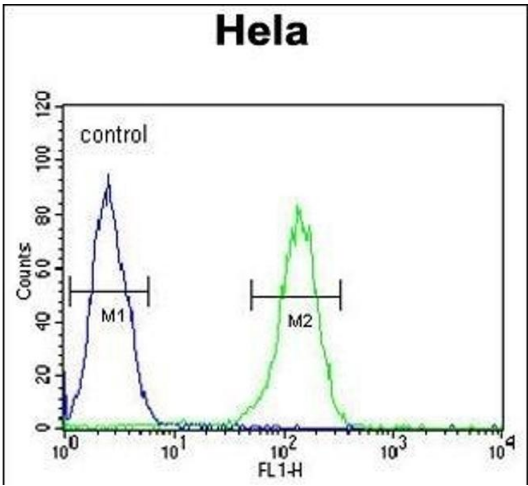
Application Details

Application Notes:	WB: 1:1000. IHC-P: 1:50~100. FC: 1:10~50
Restrictions:	For Research Use only

Handling

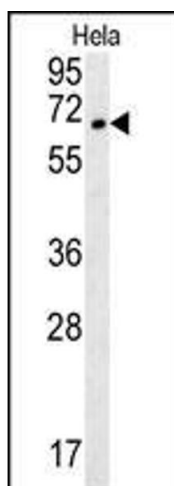
Format:	Liquid
Buffer:	Purified polyclonal antibody supplied in PBS with 0.09 % (W/V) sodium azide.
Preservative:	Sodium azide
Precaution of Use:	This product contains Sodium azide: a POISONOUS AND HAZARDOUS SUBSTANCE which should be handled by trained staff only.
Storage:	4 °C, -20 °C
Storage Comment:	Maintain refrigerated at 2-8 °C for up to 6 months. For long term storage store at -20 °C in small aliquots to prevent freeze-thaw cycles.
Expiry Date:	6 months

Images



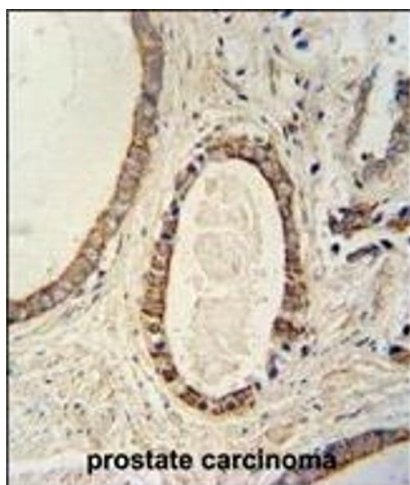
Flow Cytometry

Image 1. TME Antibody (N-term) (ABIN654026 and ABIN2843945) flow cytometric analysis of Hela cells (right histogram) compared to a negative control cell (left histogram). FITC-conjugated goat-anti-rabbit secondary antibodies were used for the analysis.



Western Blotting

Image 2. TME Antibody (N-term) (ABIN654026 and ABIN2843945) western blot analysis in HeLa cell line lysates (35 µg/lane). This demonstrates the TME antibody detected the TME protein (arrow).



Immunohistochemistry (Paraffin-embedded Sections)

Image 3. TME antibody (N-term) (ABIN654026 and ABIN2843945) immunohistochemistry analysis in formalin fixed and paraffin embedded human prostate carcinoma followed by peroxidase conjugation of the secondary antibody and DAB staining. This data demonstrates the use of the TME antibody (N-term) for immunohistochemistry. Clinical relevance has not been evaluated.