

Datasheet for ABIN654072
anti-APOL6 antibody (AA 126-155)[Go to Product page](#)

3 Images

Overview

Quantity:	400 µL
Target:	APOL6
Binding Specificity:	AA 126-155
Reactivity:	Human
Host:	Rabbit
Clonality:	Polyclonal
Conjugate:	This APOL6 antibody is un-conjugated
Application:	Western Blotting (WB), Flow Cytometry (FACS), Immunohistochemistry (Paraffin-embedded Sections) (IHC (p))

Product Details

Immunogen:	This APOL6 antibody is generated from rabbits immunized with a KLH conjugated synthetic peptide between 126-155 amino acids from the Central region of human APOL6.
Clone:	RB19166
Isotype:	Ig Fraction
Purification:	This antibody is purified through a protein A column, followed by peptide affinity purification.

Target Details

Target:	APOL6
Alternative Name:	APOL6 (APOL6 Products)

Target Details

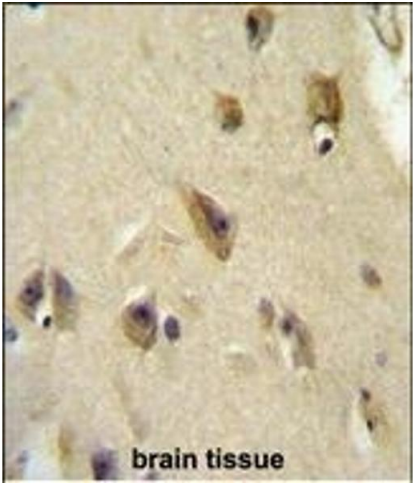
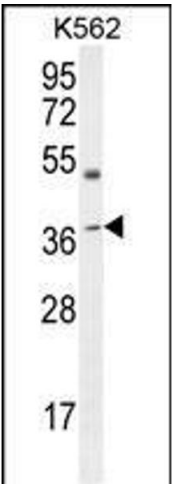
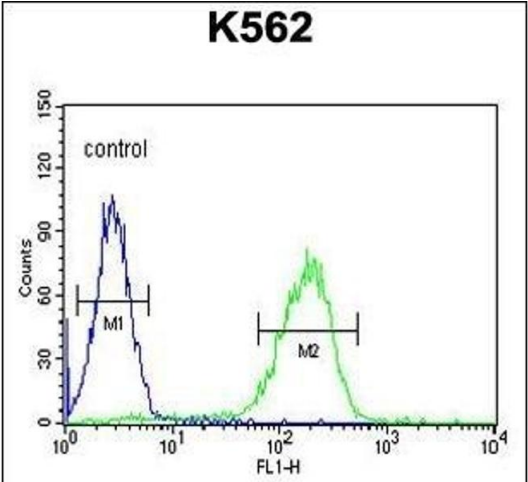
Background:	This gene is a member of the apolipoprotein L gene family. The encoded protein is found in the cytoplasm, where it may affect the movement of lipids or allow the binding of lipids to organelles.
Molecular Weight:	38128
Gene ID:	80830
NCBI Accession:	NP_085144
UniProt:	Q9BWW8

Application Details

Application Notes:	WB: 1:1000. IHC-P: 1:50~100. FC: 1:10~50
Restrictions:	For Research Use only

Handling

Format:	Liquid
Buffer:	Purified polyclonal antibody supplied in PBS with 0.09 % (W/V) sodium azide.
Preservative:	Sodium azide
Precaution of Use:	This product contains Sodium azide: a POISONOUS AND HAZARDOUS SUBSTANCE which should be handled by trained staff only.
Storage:	4 °C, -20 °C
Storage Comment:	Maintain refrigerated at 2-8 °C for up to 6 months. For long term storage store at -20 °C in small aliquots to prevent freeze-thaw cycles.
Expiry Date:	6 months



Flow Cytometry

Image 1. OL6 Antibody (Center) 10113c flow cytometric analysis of K562 cells (right histogram) compared to a negative control cell (left histogram). FITC-conjugated goat-anti-rabbit secondary antibodies were used for the analysis.

Western Blotting

Image 2. OL6 Antibody (Center) 10113c western blot analysis in K562 cell line lysates (35 µg/lane). This demonstrates the OL6 antibody detected the OL6 protein (arrow).

Immunohistochemistry (Paraffin-embedded Sections)

Image 3. OL6 Antibody (Center) 10113c immunohistochemistry analysis in formalin fixed and paraffin embedded human brain tissue followed by peroxidase conjugation of the secondary antibody and DAB staining. This data demonstrates the use of the OL6 Antibody (Center) for immunohistochemistry. Clinical relevance has not been evaluated.