

Datasheet for ABIN654073  
**anti-STIM1 antibody (C-Term)**



[Go to Product page](#)

2 Images 1 Publication

## Overview

Quantity:	400 µL
Target:	STIM1
Binding Specificity:	AA 509-538, C-Term
Reactivity:	Human
Host:	Rabbit
Clonality:	Polyclonal
Conjugate:	This STIM1 antibody is un-conjugated
Application:	Western Blotting (WB), Immunohistochemistry (Paraffin-embedded Sections) (IHC (p))

## Product Details

Immunogen:	This STIM1 antibody is generated from rabbits immunized with a KLH conjugated synthetic peptide between 509-538 amino acids from the C-terminal region of human STIM1.
Clone:	RB19222
Isotype:	Ig Fraction
Predicted Reactivity:	M
Purification:	This antibody is purified through a protein A column, followed by peptide affinity purification.

## Target Details

Target:	STIM1
Alternative Name:	STIM1 ( <a href="#">STIM1 Products</a> )

## Target Details

Background:	This gene encodes a type 1 transmembrane protein that mediates Ca <sup>2+</sup> influx after depletion of intracellular Ca <sup>2+</sup> stores by gating of store-operated Ca <sup>2+</sup> influx channels (SOCs). It is one of several genes located in the imprinted gene domain of 11p15.5, an important tumor-suppressor gene region. Alterations in this region have been associated with the Beckwith-Wiedemann syndrome, Wilms tumor, rhabdomyosarcoma, adrenocortical carcinoma, and lung, ovarian, and breast cancer. This gene may play a role in malignancies and disease that involve this region, as well as early hematopoiesis, by mediating attachment to stromal cells. This gene is oriented in a head-to-tail configuration with the ribonucleotide reductase 1 gene (RRM1), with the 3' end of this gene situated 1.6 kb from the 5' end of the RRM1 gene.
Molecular Weight:	77423
Gene ID:	6786
NCBI Accession:	<a href="#">NP_001264891</a> , <a href="#">NP_003147</a>
UniProt:	<a href="#">Q13586</a>
Pathways:	<a href="#">TCR Signaling</a> , <a href="#">BCR Signaling</a>

## Application Details

Application Notes:	WB: 1:1000. IHC-P: 1:50~100
Restrictions:	For Research Use only

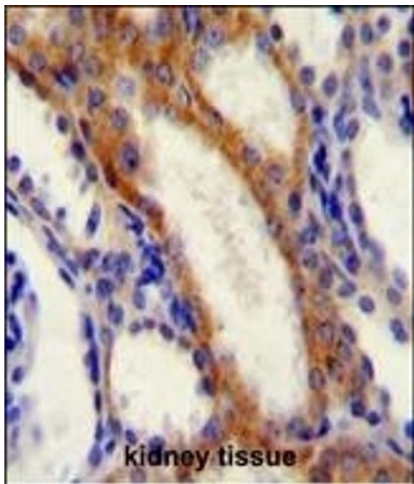
## Handling

Format:	Liquid
Buffer:	Purified polyclonal antibody supplied in PBS with 0.09 % (W/V) sodium azide.
Preservative:	Sodium azide
Precaution of Use:	This product contains Sodium azide: a POISONOUS AND HAZARDOUS SUBSTANCE which should be handled by trained staff only.
Storage:	4 °C,-20 °C
Storage Comment:	Maintain refrigerated at 2-8 °C for up to 6 months. For long term storage store at -20 °C in small aliquots to prevent freeze-thaw cycles.
Expiry Date:	6 months

Publications

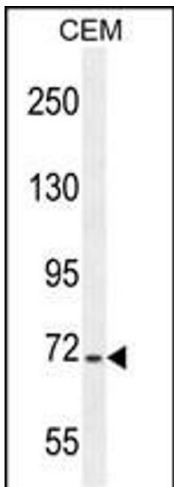
Product cited in: Zhou, Gu, Li, Li, Zhu, Gao, Zang, Wang, Shan, Yang: "Suppression of STIM1 inhibits the migration and invasion of human prostate cancer cells and is associated with PI3K/Akt signaling inactivation." in: **Oncology reports**, Vol. 38, Issue 5, pp. 2629-2636, (2018) ([PubMed](#)).

Images



**Immunohistochemistry (Paraffin-embedded Sections)**

**Image 1.** STIM1 Antibody (C-term) (ABIN654073 and ABIN2843969) immunohistochemistry analysis in formalin fixed and paraffin embedded human kidney tissue followed by peroxidase conjugation of the secondary antibody and DAB staining. This data demonstrates the use of the STIM1 Antibody (C-term) for immunohistochemistry. Clinical relevance has not been evaluated.



**Western Blotting**

**Image 2.** STIM1 Antibody (C-term) (ABIN654073 and ABIN2843969) western blot analysis in CEM cell line lysates (35 µg/lane). This demonstrates the STIM1 antibody detected the STIM1 protein (arrow).