



[Go to Product page](#)

Datasheet for ABIN654085

anti-MINPP1 antibody (N-Term)

4 Images

Overview

Quantity:	400 µL
Target:	MINPP1
Binding Specificity:	AA 28-55, N-Term
Reactivity:	Human
Host:	Rabbit
Clonality:	Polyclonal
Conjugate:	This MINPP1 antibody is un-conjugated
Application:	Western Blotting (WB), Flow Cytometry (FACS), Immunohistochemistry (Paraffin-embedded Sections) (IHC (p))

Product Details

Immunogen:	This MINPP1 antibody is generated from rabbits immunized with a KLH conjugated synthetic peptide between 28-55 amino acids from the N-terminal region of human MINPP1.
Clone:	RB21470
Isotype:	Ig Fraction
Predicted Reactivity:	M, Rat
Purification:	This antibody is purified through a protein A column, followed by peptide affinity purification.

Target Details

Target:	MINPP1
---------	--------

Target Details

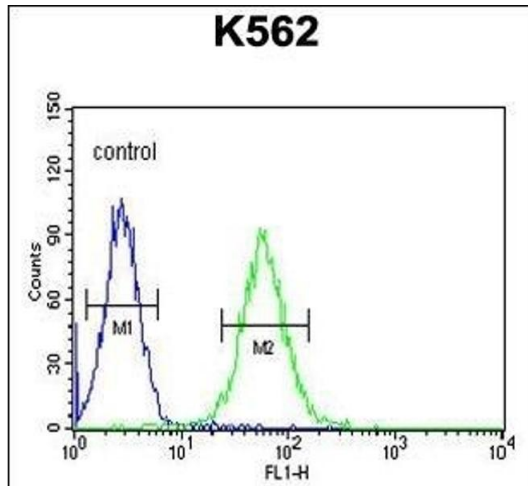
Alternative Name:	MINPP1 (MINPP1 Products)
Background:	This gene encodes multiple inositol polyphosphate phosphatase, an enzyme that removes 3-phosphate from inositol phosphate substrates. It is the only enzyme known to hydrolyze inositol pentakisphosphate and inositol hexakisphosphate. This enzyme also converts 2,3-bisphosphoglycerate (2,3-BPG) to 2-phosphoglycerate, an activity formerly thought to be exclusive to 2,3-BPG synthase/2-phosphatase (BPGM) in the Rapoport-Luebering shunt of the glycolytic pathway.
Molecular Weight:	55051
Gene ID:	9562
NCBI Accession:	NP_001171588 , NP_001171589 , NP_004888
UniProt:	Q9UNW1

Application Details

Application Notes:	WB: 1:1000. WB: 1:1000. IHC-P: 1:50~100. FC: 1:10~50
Restrictions:	For Research Use only

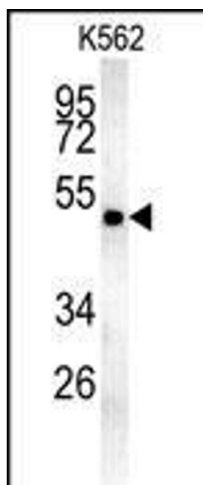
Handling

Format:	Liquid
Buffer:	Purified polyclonal antibody supplied in PBS with 0.09 % (W/V) sodium azide.
Preservative:	Sodium azide
Precaution of Use:	This product contains Sodium azide: a POISONOUS AND HAZARDOUS SUBSTANCE which should be handled by trained staff only.
Storage:	4 °C,-20 °C
Storage Comment:	Maintain refrigerated at 2-8 °C for up to 6 months. For long term storage store at -20 °C in small aliquots to prevent freeze-thaw cycles.
Expiry Date:	6 months



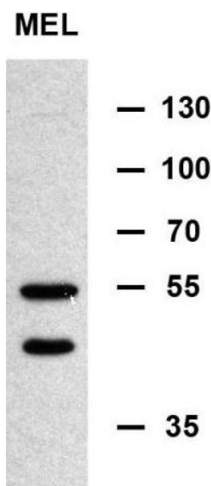
Flow Cytometry

Image 1. MIN Antibody (N-term) (ABIN654085 and ABIN2843973) flow cytometric analysis of K562 cells (right histogram) compared to a negative control cell (left histogram). FITC-conjugated goat-anti-rabbit secondary antibodies were used for the analysis.



Western Blotting

Image 2. MIN Antibody (N-term) (ABIN654085 and ABIN2843973) western blot analysis in K562 cell line lysates (35 µg/lane). This demonstrates the MIN antibody detected the MIN protein (arrow).



Western Blotting

Image 3. MIN Antibody (N-term) (ABIN654085 and ABIN2843973) western blot analysis in murine erythroleukemia cell line lysates (35 µg/lane). This demonstrates the MIN antibody detected the MIN protein (arrow). (Kindly offered by Doc. Norma)

Please check the [product details page](#) for more images. Overall 4 images are available for ABIN654085.