

Datasheet for ABIN654086  
**anti-IGF2BP2 antibody (C-Term)**[Go to Product page](#)

## 3 Images

## Overview

Quantity:	400 µL
Target:	IGF2BP2
Binding Specificity:	AA 530-556, C-Term
Reactivity:	Human
Host:	Rabbit
Clonality:	Polyclonal
Conjugate:	This IGF2BP2 antibody is un-conjugated
Application:	Western Blotting (WB), Flow Cytometry (FACS), Immunohistochemistry (Paraffin-embedded Sections) (IHC (p))

## Product Details

Immunogen:	This IGF2BP2 antibody is generated from rabbits immunized with a KLH conjugated synthetic peptide between 530-556 amino acids from the C-terminal region of human IGF2BP2.
Clone:	RB21527
Isotype:	Ig Fraction
Predicted Reactivity:	M
Purification:	This antibody is purified through a protein A column, followed by peptide affinity purification.

## Target Details

Target:	IGF2BP2
---------	---------

## Target Details

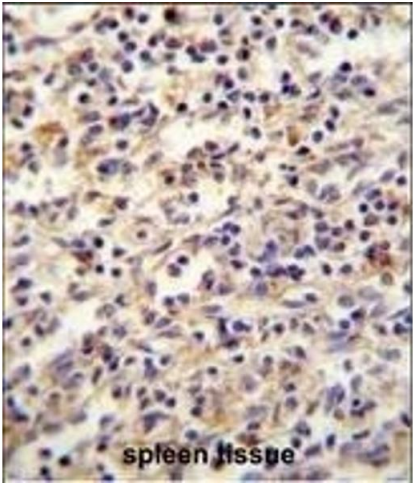
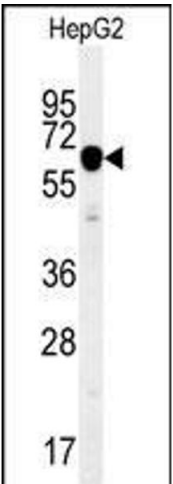
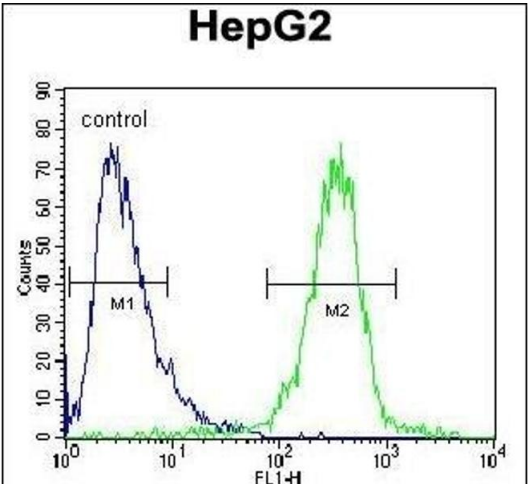
Alternative Name:	IGF2BP2 ( <a href="#">IGF2BP2 Products</a> )
Background:	This gene encodes a member of the IGF-II mRNA-binding protein (IMP) family. The protein encoded by this gene contains several four KH domains and two RRM domains. It functions by binding to the 5' UTR of the insulin-like growth factor 2 (IGF2) mRNA and regulating IGF2 translation. Alternate transcriptional splice variants, encoding different isoforms, have been characterized.
Molecular Weight:	66121
Gene ID:	10644
NCBI Accession:	<a href="#">NP_001007226</a> , <a href="#">NP_006539</a>
UniProt:	<a href="#">Q9Y6M1</a>

## Application Details

Application Notes:	WB: 1:1000. IHC-P: 1:50~100. FC: 1:10~50
Restrictions:	For Research Use only

## Handling

Format:	Liquid
Buffer:	Purified polyclonal antibody supplied in PBS with 0.09 % (W/V) sodium azide.
Preservative:	Sodium azide
Precaution of Use:	This product contains Sodium azide: a POISONOUS AND HAZARDOUS SUBSTANCE which should be handled by trained staff only.
Storage:	4 °C, -20 °C
Storage Comment:	Maintain refrigerated at 2-8 °C for up to 6 months. For long term storage store at -20 °C in small aliquots to prevent freeze-thaw cycles.
Expiry Date:	6 months



### Flow Cytometry

**Image 1.** IGF2BP2 Antibody (C-term) (ABIN654086 and ABIN2843974) flow cytometric analysis of HepG2 cells (right histogram) compared to a negative control cell (left histogram). FITC-conjugated goat-anti-rabbit secondary antibodies were used for the analysis.

### Western Blotting

**Image 2.** IGF2BP2 Antibody (C-term) (ABIN654086 and ABIN2843974) western blot analysis in HepG2 cell line lysates (35 µg/lane). This demonstrates the IGF2BP2 antibody detected the IGF2BP2 protein (arrow).

### Immunohistochemistry (Paraffin-embedded Sections)

**Image 3.** IGF2BP2 Antibody (C-term) (ABIN654086 and ABIN2843974) immunohistochemistry analysis in formalin fixed and paraffin embedded human spleen tissue followed by peroxidase conjugation of the secondary antibody and DAB staining. This data demonstrates the use of the IGF2BP2 Antibody (C-term) for immunohistochemistry. Clinical relevance has not been evaluated.