



[Go to Product page](#)

Datasheet for ABIN654093

anti-CCL21 antibody (AA 23-52)

2 Images

Overview

Quantity:	400 µL
Target:	CCL21
Binding Specificity:	AA 23-52
Reactivity:	Human
Host:	Rabbit
Clonality:	Polyclonal
Conjugate:	This CCL21 antibody is un-conjugated
Application:	Western Blotting (WB), Immunohistochemistry (Paraffin-embedded Sections) (IHC (p))

Product Details

Immunogen:	This CCL21 antibody is generated from rabbits immunized with a KLH conjugated synthetic peptide between 23-52 amino acids from the Central region of human CCL21.
Clone:	RB21868
Isotype:	Ig Fraction
Purification:	This antibody is purified through a protein A column, followed by peptide affinity purification.

Target Details

Target:	CCL21
Alternative Name:	CCL21 (CCL21 Products)
Background:	This gene is one of several CC cytokine genes clustered on the p-arm of chromosome 9.

Target Details

Cytokines are a family of secreted proteins involved in immunoregulatory and inflammatory processes. The CC cytokines are proteins characterized by two adjacent cysteines. Similar to other chemokines the protein encoded by this gene inhibits hemopoiesis and stimulates chemotaxis. This protein is chemotactic in vitro for thymocytes and activated T cells, but not for B cells, macrophages, or neutrophils. The cytokine encoded by this gene may also play a role in mediating homing of lymphocytes to secondary lymphoid organs. It is a high affinity functional ligand for chemokine receptor 7 (CCR7) that is expressed on T and B lymphocytes and a known receptor for another member of the cytokine family (small inducible cytokine A19). [provided by RefSeq].

Molecular Weight: 14646

Gene ID: 6366

NCBI Accession: [NP_002980](#)

UniProt: [O00585](#)

Pathways: [Regulation of Actin Filament Polymerization](#)

Application Details

Application Notes: WB: 1:1000. IHC-P: 1:50~100

Restrictions: For Research Use only

Handling

Format: Liquid

Buffer: Purified polyclonal antibody supplied in PBS with 0.09 % (W/V) sodium azide.

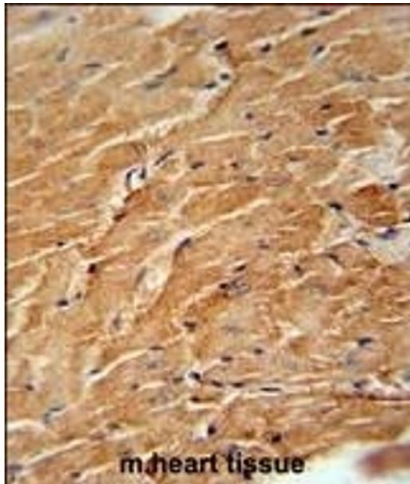
Preservative: Sodium azide

Precaution of Use: This product contains Sodium azide: a POISONOUS AND HAZARDOUS SUBSTANCE which should be handled by trained staff only.

Storage: 4 °C,-20 °C

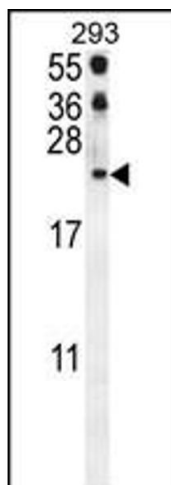
Storage Comment: Maintain refrigerated at 2-8 °C for up to 6 months. For long term storage store at -20 °C in small aliquots to prevent freeze-thaw cycles.

Expiry Date: 6 months



Immunohistochemistry (Paraffin-embedded Sections)

Image 1. CCL21 Antibody (Center) (ABIN654093 and ABIN2843979) immunohistochemistry analysis in formalin fixed and paraffin embedded mouse heart tissue followed by peroxidase conjugation of the secondary antibody and DAB staining. This data demonstrates the use of the CCL21 Antibody (Center) for immunohistochemistry. Clinical relevance has not been evaluated.



Western Blotting

Image 2. CCL21 Antibody (Center) (ABIN654093 and ABIN2843979) western blot analysis in 293 cell line lysates (35 µg/lane). This demonstrates the CCL21 antibody detected the CCL21 protein (arrow).