

Datasheet for ABIN654094  
**anti-Cyclin Y antibody (AA 140-169)**

## 3 Images

[Go to Product page](#)

## Overview

Quantity:	400 µL
Target:	Cyclin Y (CCNY)
Binding Specificity:	AA 140-169
Reactivity:	Human, Mouse
Host:	Rabbit
Clonality:	Polyclonal
Conjugate:	This Cyclin Y antibody is un-conjugated
Application:	Western Blotting (WB), Immunohistochemistry (Paraffin-embedded Sections) (IHC (p))

## Product Details

Immunogen:	This CCNY antibody is generated from rabbits immunized with a KLH conjugated synthetic peptide between 140-169 amino acids from the Central region of human CCNY.
Clone:	RB21871
Isotype:	Ig Fraction
Purification:	This antibody is purified through a protein A column, followed by peptide affinity purification.

## Target Details

Target:	Cyclin Y (CCNY)
Alternative Name:	CCNY ( <a href="#">CCNY Products</a> )
Background:	Cyclins, such as CCNY, control cell division cycles and regulate cyclin-dependent kinases (e.g.,

## Target Details

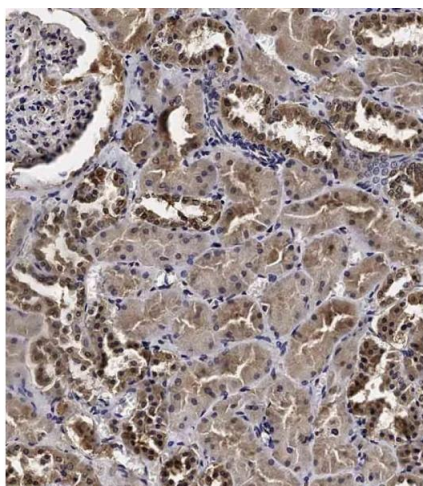
	CDC2, MIM 116940) (Li et al., 2009 [PubMed 18060517]).
Molecular Weight:	39337
Gene ID:	219771
NCBI Accession:	<a href="#">NP_659449</a> , <a href="#">NP_859049</a>
UniProt:	<a href="#">Q8ND76</a>

## Application Details

Application Notes:	WB: 1:1000. IHC-P: 1:100. IHC-P: 1:100
Restrictions:	For Research Use only

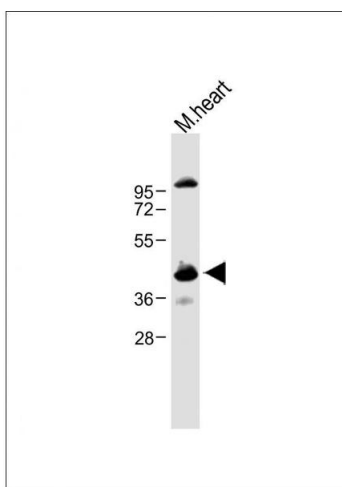
## Handling

Format:	Liquid
Buffer:	Purified polyclonal antibody supplied in PBS with 0.09 % (W/V) sodium azide.
Preservative:	Sodium azide
Precaution of Use:	This product contains Sodium azide: a POISONOUS AND HAZARDOUS SUBSTANCE which should be handled by trained staff only.
Storage:	4 °C,-20 °C
Storage Comment:	Maintain refrigerated at 2-8 °C for up to 6 months. For long term storage store at -20 °C in small aliquots to prevent freeze-thaw cycles.
Expiry Date:	6 months



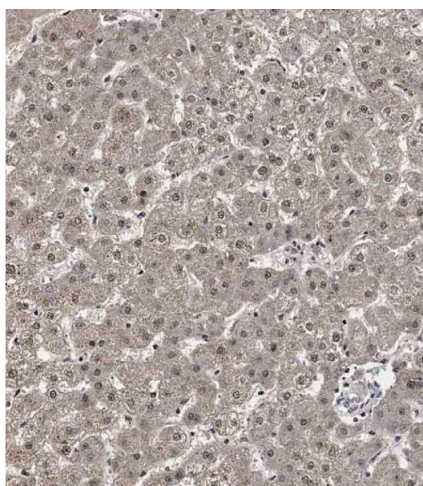
#### Immunohistochemistry (Paraffin-embedded Sections)

**Image 1.** Immunohistochemical analysis of C on paraffin-embedded Human kidney tissue. Tissue was fixed with formaldehyde at room temperature. Heat induced epitope retrieval was performed by EDTA buffer (pH 9.0). Samples were incubated with primary Antibody (1:100) for 1 hour at room temperature. Undiluted CRF Anti-Polyvalent HRP Polymer antibody was used as the secondary antibody.



#### Western Blotting

**Image 2.** Anti-CCNY Antibody (Center) at 1:1000 dilution + Mouse heart lysate Lysates/proteins at 20 µg per lane. Secondary Goat Anti-Rabbit IgG, (H+L), Peroxidase conjugated at 1/10000 dilution. Predicted band size : 39 kDa Blocking/Dilution buffer: 5 % NFDM/TBST.



#### Immunohistochemistry (Paraffin-embedded Sections)

**Image 3.** Immunohistochemical analysis of C on paraffin-embedded Human liver tissue. Tissue was fixed with formaldehyde at room temperature. Heat induced epitope retrieval was performed by EDTA buffer (pH 9.0). Samples were incubated with primary Antibody (1:100) for 1 hour at room temperature. Undiluted CRF Anti-Polyvalent HRP Polymer antibody was used as the secondary antibody.