

Datasheet for ABIN654102  
**anti-ABCC10 antibody (AA 767-793)**[Go to Product page](#)

## 3 Images

## Overview

Quantity:	400 µL
Target:	ABCC10
Binding Specificity:	AA 767-793
Reactivity:	Human
Host:	Rabbit
Clonality:	Polyclonal
Conjugate:	This ABCC10 antibody is un-conjugated
Application:	Western Blotting (WB), Flow Cytometry (FACS), Immunohistochemistry (Paraffin-embedded Sections) (IHC (p))

## Product Details

Immunogen:	This ABCC10 antibody is generated from rabbits immunized with a KLH conjugated synthetic peptide between 767-793 amino acids from the Central region of human ABCC10.
Clone:	RB22383
Isotype:	Ig Fraction
Purification:	This antibody is purified through a protein A column, followed by peptide affinity purification.

## Target Details

Target:	ABCC10
Alternative Name:	ABCC10 ( <a href="#">ABCC10 Products</a> )

## Target Details

**Background:** The protein encoded by this gene is a member of the superfamily of ATP-binding cassette (ABC) transporters. ABC proteins transport various molecules across extra- and intra-cellular membranes. ABC genes are divided into seven distinct subfamilies (ABC1, MDR/TAP, MRP, ALD, OABP, GCN20, and White). This ABC full-transporter is a member of the MRP subfamily which is involved in multi-drug resistance. Multiple transcript variants encoding different isoforms have been found for this gene.

**Molecular Weight:** 161629

**Gene ID:** 89845

**NCBI Accession:** [NP\\_001185863](#), [NP\\_258261](#)

**UniProt:** [Q5T3U5](#)

## Application Details

**Application Notes:** WB: 1:1000. IHC-P: 1:50~100. FC: 1:10~50

**Restrictions:** For Research Use only

## Handling

**Format:** Liquid

**Buffer:** Purified polyclonal antibody supplied in PBS with 0.09 % (W/V) sodium azide.

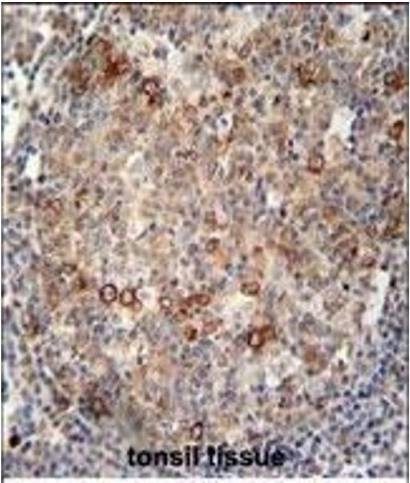
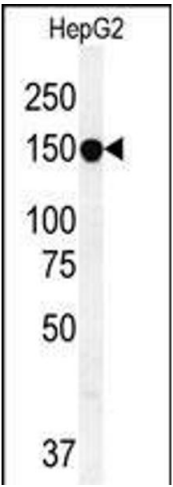
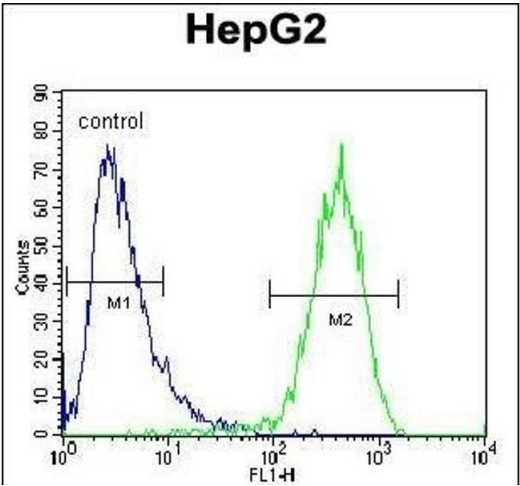
**Preservative:** Sodium azide

**Precaution of Use:** This product contains Sodium azide: a POISONOUS AND HAZARDOUS SUBSTANCE which should be handled by trained staff only.

**Storage:** 4 °C, -20 °C

**Storage Comment:** Maintain refrigerated at 2-8 °C for up to 6 months. For long term storage store at -20 °C in small aliquots to prevent freeze-thaw cycles.

**Expiry Date:** 6 months



### Flow Cytometry

**Image 1.** ABCC10 Antibody (Center) (ABIN654102 and ABIN2843986) flow cytometric analysis of HepG2 cells (right histogram) compared to a negative control cell (left histogram). FITC-conjugated goat-anti-rabbit secondary antibodies were used for the analysis.

### Western Blotting

**Image 2.** ABCC10 Antibody (Center) (ABIN654102 and ABIN2843986) western blot analysis in HepG2 cell line lysates (35 µg/lane). This demonstrates the ABCC10 antibody detected the ABCC10 protein (arrow).

### Immunohistochemistry (Paraffin-embedded Sections)

**Image 3.** ABCC10 antibody (Center) (ABIN654102 and ABIN2843986) immunohistochemistry analysis in formalin fixed and paraffin embedded human tonsil tissue followed by peroxidase conjugation of the secondary antibody and DAB staining. This data demonstrates the use of the ABCC10 antibody (Center) for immunohistochemistry. Clinical relevance has not been evaluated.