

Datasheet for ABIN654103

**anti-ABCC3 antibody (AA 899-925)**[Go to Product page](#)**4** Images

## Overview

Quantity:	400 µL
Target:	ABCC3
Binding Specificity:	AA 899-925
Reactivity:	Human
Host:	Rabbit
Clonality:	Polyclonal
Conjugate:	This ABCC3 antibody is un-conjugated
Application:	Western Blotting (WB), Flow Cytometry (FACS), Immunohistochemistry (Paraffin-embedded Sections) (IHC (p))

## Product Details

Immunogen:	This ABCC3 antibody is generated from rabbits immunized with a KLH conjugated synthetic peptide between 899-925 amino acids from the Central region of human ABCC3.
Clone:	RB22384
Isotype:	Ig Fraction
Purification:	This antibody is purified through a protein A column, followed by peptide affinity purification.

## Target Details

Target:	ABCC3
Alternative Name:	ABCC3 ( <a href="#">ABCC3 Products</a> )

## Target Details

**Background:** The protein encoded by this gene is a member of the superfamily of ATP-binding cassette (ABC) transporters. ABC proteins transport various molecules across extra- and intra-cellular membranes. ABC genes are divided into seven distinct subfamilies (ABC1, MDR/TAP, MRP, ALD, OABP, GCN20, White). This protein is a member of the MRP subfamily which is involved in multi-drug resistance. The specific function of this protein has not yet been determined, however, this protein may play a role in the transport of biliary and intestinal excretion of organic anions. Alternatively spliced variants which encode different protein isoforms have been described, however, not all variants have been fully characterized.

**Molecular Weight:** 169343

**Gene ID:** 8714

**NCBI Accession:** [NP\\_001137542](#), [NP\\_003777](#)

**UniProt:** [O15438](#)

## Application Details

**Application Notes:** WB: 1:1000. WB: 1:1000. IHC-P: 1:10~50. FC: 1:10~50

**Restrictions:** For Research Use only

## Handling

**Format:** Liquid

**Buffer:** Purified polyclonal antibody supplied in PBS with 0.09 % (W/V) sodium azide.

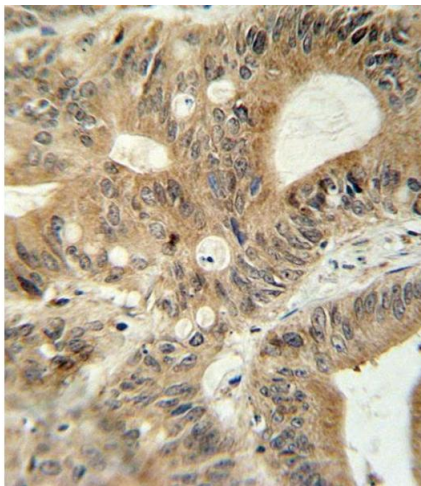
**Preservative:** Sodium azide

**Precaution of Use:** This product contains Sodium azide: a POISONOUS AND HAZARDOUS SUBSTANCE which should be handled by trained staff only.

**Storage:** 4 °C,-20 °C

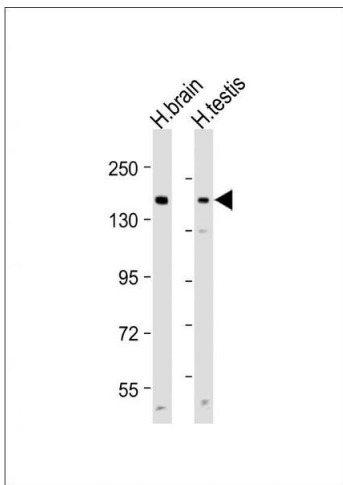
**Storage Comment:** Maintain refrigerated at 2-8 °C for up to 6 months. For long term storage store at -20 °C in small aliquots to prevent freeze-thaw cycles.

**Expiry Date:** 6 months



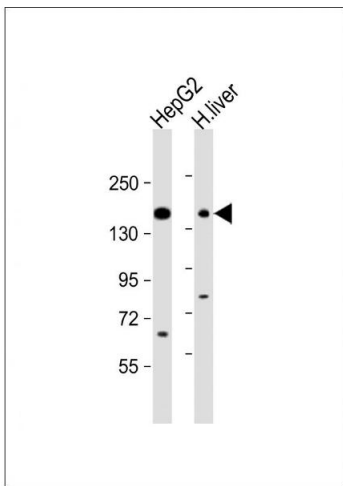
#### Immunohistochemistry (Paraffin-embedded Sections)

**Image 1.** ABCC3 antibody (Center) (ABIN654103 and ABIN2843987) immunohistochemistry analysis in formalin fixed and paraffin embedded human colon carcinoma followed by peroxidase conjugation of the secondary antibody and DAB staining. This data demonstrates the use of the ABCC3 antibody (Center) for immunohistochemistry. Clinical relevance has not been evaluated.



#### Western Blotting

**Image 2.** All lanes : Anti-ABCC3 Antibody (Center) at 1:1000 dilution Lane 1: Human brain lysate Lane 2: Human testis lysate Lysates/proteins at 20 µg per lane. Secondary Goat Anti-Rabbit IgG, (H+L), Peroxidase conjugated at 1/10000 dilution. Predicted band size : 169 kDa Blocking/Dilution buffer: 5 % NFDM/TBST.



#### Western Blotting

**Image 3.** All lanes : Anti-ABCC3 Antibody (Center) at 1:1000 dilution Lane 1: HepG2 whole cell lysate Lane 2: human liver lysate Lysates/proteins at 20 µg per lane. Secondary Goat Anti-Rabbit IgG, (H+L), Peroxidase conjugated at 1/10000 dilution. Predicted band size : 169 kDa Blocking/Dilution buffer: 5 % NFDM/TBST.

Please check the [product details page](#) for more images. Overall 4 images are available for ABIN654103.