



[Go to Product page](#)

Datasheet for ABIN654110

anti-PPP1R14C antibody (C-Term)

2 Images

1 Publication

Overview

Quantity:	400 µL
Target:	PPP1R14C
Binding Specificity:	AA 126-155, C-Term
Reactivity:	Human, Mouse
Host:	Rabbit
Clonality:	Polyclonal
Conjugate:	This PPP1R14C antibody is un-conjugated
Application:	Western Blotting (WB), Immunohistochemistry (Paraffin-embedded Sections) (IHC (p))

Product Details

Immunogen:	This PP1R14C antibody is generated from rabbits immunized with a KLH conjugated synthetic peptide between 126-155 amino acids from the C-terminal region of human PP1R14C.
Clone:	RB22524
Isotype:	Ig Fraction
Purification:	This antibody is purified through a protein A column, followed by peptide affinity purification.

Target Details

Target:	PPP1R14C
Alternative Name:	PP1R14C (PPP1R14C Products)
Background:	The degree of protein phosphorylation is regulated by a balance of protein kinase and

Target Details

phosphatase activities. Protein phosphatase-1 (PP1, see MIM 176875) is a signal-transducing phosphatase that influences neuronal activity, protein synthesis, metabolism, muscle contraction, and cell division. PPP1R14C is an inhibitor of PP1 (Liu et al., 2002 [PubMed 11812771]).[supplied by OMIM].

Molecular Weight: 17843

Gene ID: 81706

NCBI Accession: [NP_112211](#)

UniProt: [Q8TAE6](#)

Application Details

Application Notes: WB: 1:1000. IHC-P: 1:50~100

Restrictions: For Research Use only

Handling

Format: Liquid

Buffer: Purified polyclonal antibody supplied in PBS with 0.09 % (W/V) sodium azide.

Preservative: Sodium azide

Precaution of Use: This product contains Sodium azide: a POISONOUS AND HAZARDOUS SUBSTANCE which should be handled by trained staff only.

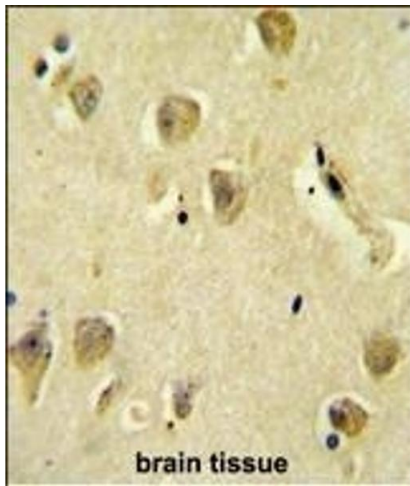
Storage: 4 °C,-20 °C

Storage Comment: Maintain refrigerated at 2-8 °C for up to 6 months. For long term storage store at -20 °C in small aliquots to prevent freeze-thaw cycles.

Expiry Date: 6 months

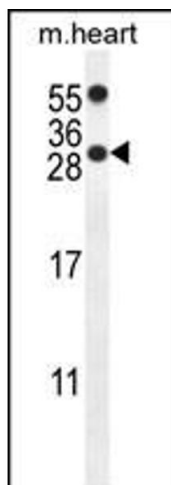
Publications

Product cited in: Martins, Eusebio, Correia, Marinho, Casares, Pereira: "TGFβ/Activin signalling is required for ribosome biogenesis and cell growth in Drosophila salivary glands." in: **Open biology**, Vol. 7, Issue 1, (2017) ([PubMed](#)).



Immunohistochemistry (Paraffin-embedded Sections)

Image 1. R14C Antibody (C-term) (ABIN654110 and ABIN2843992) immunohistochemistry analysis in formalin fixed and paraffin embedded human brain tissue followed by peroxidase conjugation of the secondary antibody and DAB staining. This data demonstrates the use of the R14C Antibody (C-term) for immunohistochemistry. Clinical relevance has not been evaluated.



Western Blotting

Image 2. R14C Antibody (C-term) (ABIN654110 and ABIN2843992) western blot analysis in mouse heart tissue lysates (35 µg/lane). This demonstrates the R14C antibody detected the R14C protein (arrow).