

Datasheet for ABIN654121  
**anti-ARL8A antibody (AA 116-142)**[Go to Product page](#)

## 4 Images

## Overview

Quantity:	400 µL
Target:	ARL8A
Binding Specificity:	AA 116-142
Reactivity:	Human, Mouse
Host:	Rabbit
Clonality:	Polyclonal
Conjugate:	This ARL8A antibody is un-conjugated
Application:	Western Blotting (WB), Flow Cytometry (FACS), Immunohistochemistry (Paraffin-embedded Sections) (IHC (p))

## Product Details

Immunogen:	This ARL8A antibody is generated from rabbits immunized with a KLH conjugated synthetic peptide between 116-142 amino acids from the Central region of human ARL8A.
Clone:	RB22845
Isotype:	Ig Fraction
Predicted Reactivity:	C
Purification:	This antibody is purified through a protein A column, followed by peptide affinity purification.

## Target Details

Target:	ARL8A
---------	-------

## Target Details

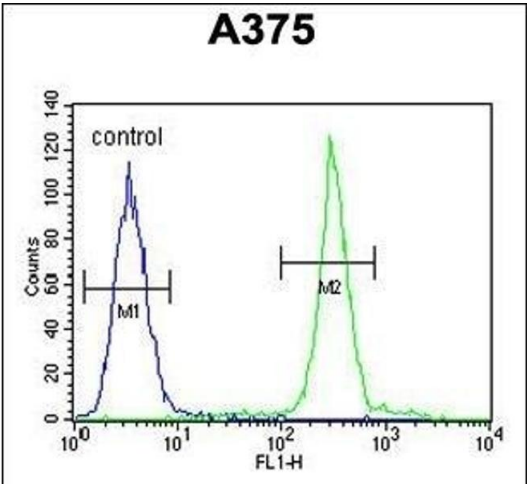
Alternative Name:	ARL8A ( <a href="#">ARL8A Products</a> )
Molecular Weight:	21416
Gene ID:	127829
NCBI Accession:	<a href="#">NP_001243058</a> , <a href="#">NP_620150</a>
UniProt:	<a href="#">Q96BM9</a>

## Application Details

Application Notes:	WB: 1:1000. WB: 1:1000. IHC-P: 1:50~100. FC: 1:10~50
Restrictions:	For Research Use only

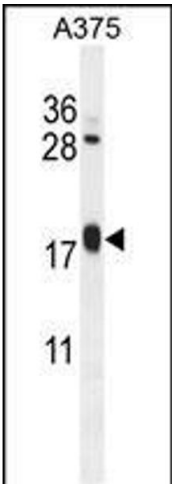
## Handling

Format:	Liquid
Buffer:	Purified polyclonal antibody supplied in PBS with 0.09 % (W/V) sodium azide.
Preservative:	Sodium azide
Precaution of Use:	This product contains Sodium azide: a POISONOUS AND HAZARDOUS SUBSTANCE which should be handled by trained staff only.
Storage:	4 °C,-20 °C
Storage Comment:	Maintain refrigerated at 2-8 °C for up to 6 months. For long term storage store at -20 °C in small aliquots to prevent freeze-thaw cycles.
Expiry Date:	6 months



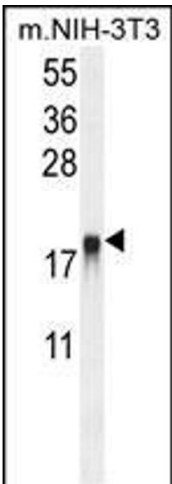
### Flow Cytometry

**Image 1.** ARL8A Antibody (Center) (ABIN654121 and ABIN2843998) flow cytometric analysis of cells (right histogram) compared to a negative control cell (left histogram). FITC-conjugated goat-anti-rabbit secondary antibodies were used for the analysis.



### Western Blotting

**Image 2.** ARL8A Antibody (Center) (ABIN654121 and ABIN2843998) western blot analysis in cell line lysates (35  $\mu$ g/lane). This demonstrates the ARL8A antibody detected the ARL8A protein (arrow).



### Western Blotting

**Image 3.** ARL8A Antibody (Center) (ABIN654121 and ABIN2843998) western blot analysis in mouse NIH-3T3 cell line lysates (35  $\mu$ g/lane). This demonstrates the ARL8A antibody detected the ARL8A protein (arrow).

Please check the [product details page](#) for more images. Overall 4 images are available for ABIN654121.