

Datasheet for ABIN654125
anti-FOXL2 antibody (N-Term)[Go to Product page](#)

2 Images

1 Publication

Overview

Quantity:	400 µL
Target:	FOXL2
Binding Specificity:	AA 3-29, N-Term
Reactivity:	Human
Host:	Rabbit
Clonality:	Polyclonal
Conjugate:	This FOXL2 antibody is un-conjugated
Application:	Western Blotting (WB), Flow Cytometry (FACS)

Product Details

Immunogen:	This FOXL2 antibody is generated from rabbits immunized with a KLH conjugated synthetic peptide between 3-29 amino acids from the N-terminal region of human FOXL2.
Clone:	RB22898
Isotype:	Ig Fraction
Purification:	This antibody is purified through a protein A column, followed by peptide affinity purification.

Target Details

Target:	FOXL2
Alternative Name:	FOXL2 (FOXL2 Products)
Background:	This gene encodes a forkhead transcription factor. The protein contains a fork-head DNA-

Target Details

	binding domain and may play a role in ovarian development and function. Mutations in this gene are a cause of blepharophimosis syndrome and premature ovarian failure 3.
Molecular Weight:	38772
Gene ID:	668
NCBI Accession:	NP_075555
UniProt:	P58012
Pathways:	Nuclear Hormone Receptor Binding , Positive Regulation of Endopeptidase Activity

Application Details

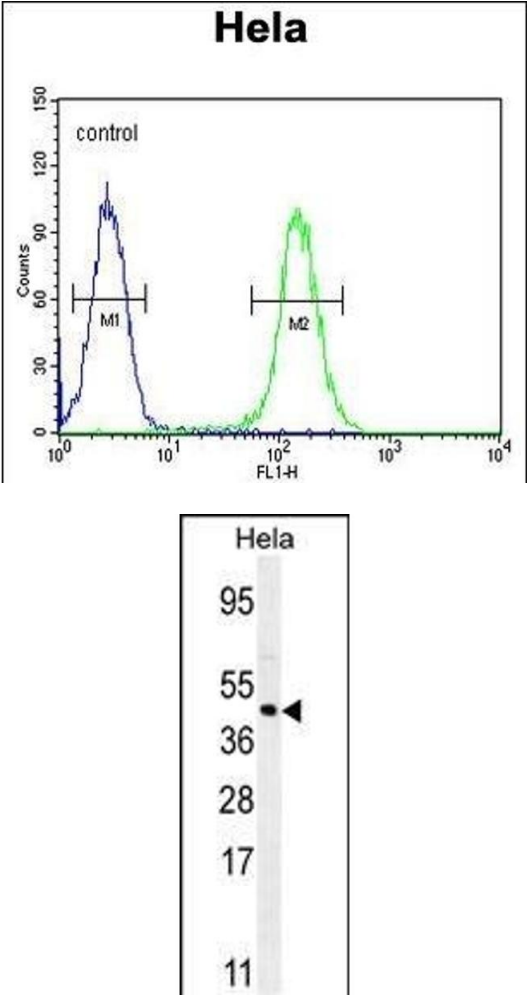
Application Notes:	WB: 1:1000. FC: 1:10~50
Restrictions:	For Research Use only

Handling

Format:	Liquid
Buffer:	Purified polyclonal antibody supplied in PBS with 0.09 % (W/V) sodium azide.
Preservative:	Sodium azide
Precaution of Use:	This product contains Sodium azide: a POISONOUS AND HAZARDOUS SUBSTANCE which should be handled by trained staff only.
Storage:	4 °C, -20 °C
Storage Comment:	Maintain refrigerated at 2-8 °C for up to 6 months. For long term storage store at -20 °C in small aliquots to prevent freeze-thaw cycles.
Expiry Date:	6 months

Publications

Product cited in:	Bernardi, Williams, Inoue, Schultz, Tsai: "A deubiquitinase negatively regulates retro-translocation of nonubiquitinated substrates." in: Molecular biology of the cell , Vol. 24, Issue 22, pp. 3545-56, (2013) (PubMed).
-------------------	---



Flow Cytometry

Image 1. FOXL2 Antibody (N-term) (ABIN654125 and ABIN2844000) flow cytometric analysis of Hela cells (right histogram) compared to a negative control cell (left histogram).FITC-conjugated goat-anti-rabbit secondary antibodies were used for the analysis.

Western Blotting

Image 2. FOXL2 Antibody (N-term) (ABIN654125 and ABIN2844000) western blot analysis in Hela cell line lysates (35 µg/lane).This demonstrates the FOXL2 antibody detected the FOXL2 protein (arrow).