

Datasheet for ABIN654131
anti-CCL4 antibody (AA 22-48)

2 Images

[Go to Product page](#)

Overview

Quantity:	400 µL
Target:	CCL4
Binding Specificity:	AA 22-48
Reactivity:	Human, Mouse
Host:	Rabbit
Clonality:	Polyclonal
Conjugate:	This CCL4 antibody is un-conjugated
Application:	Western Blotting (WB), Immunohistochemistry (Paraffin-embedded Sections) (IHC (p))

Product Details

Immunogen:	This CCL4 antibody is generated from rabbits immunized with a KLH conjugated synthetic peptide between 22-48 amino acids from the Central region of human CCL4.
Clone:	RB23429
Isotype:	Ig Fraction
Purification:	This antibody is purified through a protein A column, followed by peptide affinity purification.

Target Details

Target:	CCL4
Alternative Name:	CCL4 (CCL4 Products)
Background:	This gene is one of several cytokine genes clustered on the q-arm of chromosome 17.

Target Details

Cytokines are a family of secreted proteins involved in immunoregulatory and inflammatory processes. This protein is similar to CCL4 which inhibits HIV entry by binding to the cellular receptor CCR5. The copy number of this gene varies among individuals, most individuals have 1-5 copies in the diploid genome, although rare individuals do not contain this gene at all. The human genome reference assembly contains two copies of this gene. This record represents the more centromeric gene. [provided by RefSeq].

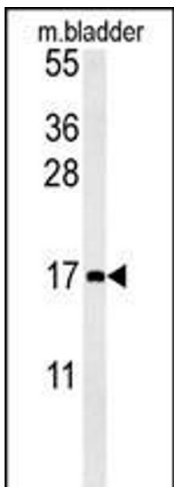
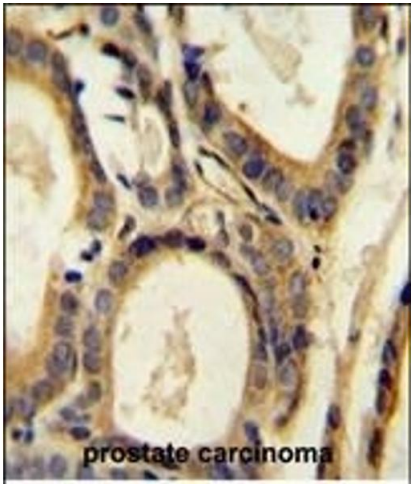
Molecular Weight:	10212
Gene ID:	9560, 6351, 388372
NCBI Accession:	NP_001001435 , NP_002975 , NP_996890
UniProt:	P13236

Application Details

Application Notes:	WB: 1:1000. IHC-P: 1:50~100
Restrictions:	For Research Use only

Handling

Format:	Liquid
Buffer:	Purified polyclonal antibody supplied in PBS with 0.09 % (W/V) sodium azide.
Preservative:	Sodium azide
Precaution of Use:	This product contains Sodium azide: a POISONOUS AND HAZARDOUS SUBSTANCE which should be handled by trained staff only.
Storage:	4 °C, -20 °C
Storage Comment:	Maintain refrigerated at 2-8 °C for up to 6 months. For long term storage store at -20 °C in small aliquots to prevent freeze-thaw cycles.
Expiry Date:	6 months



Immunohistochemistry (Paraffin-embedded Sections)

Image 1. CCL4 Antibody (Center) (ABIN654131 and ABIN2850474) immunohistochemistry analysis in formalin fixed and paraffin embedded human prostate carcinoma followed by peroxidase conjugation of the secondary antibody and DAB staining. This data demonstrates the use of the CCL4 Antibody (Center) for immunohistochemistry. Clinical relevance has not been evaluated.

Western Blotting

Image 2. CCL4 Antibody (Center) (ABIN654131 and ABIN2850474) western blot analysis in mouse bladder tissue lysates (15 µg/lane). This demonstrates the CCL4 antibody detected CCL4 protein (arrow).