

Datasheet for ABIN654135  
**anti-UBA52 antibody (C-Term)**[Go to Product page](#)

## 3 Images

## Overview

Quantity:	400 µL
Target:	UBA52
Binding Specificity:	AA 100-128, C-Term
Reactivity:	Human
Host:	Rabbit
Clonality:	Polyclonal
Conjugate:	This UBA52 antibody is un-conjugated
Application:	Western Blotting (WB), Flow Cytometry (FACS), Immunohistochemistry (Paraffin-embedded Sections) (IHC (p))

## Product Details

Immunogen:	This UBA52 antibody is generated from rabbits immunized with a KLH conjugated synthetic peptide between 100-128 amino acids from the C-terminal region of human UBA52.
Clone:	RB23503
Isotype:	Ig Fraction
Predicted Reactivity:	B, C, Pr, M, Pig, Rat, Sh
Purification:	This antibody is purified through a protein A column, followed by peptide affinity purification.

## Target Details

Target:	UBA52
---------	-------

## Target Details

Alternative Name:	UBA52 ( <a href="#">UBA52 Products</a> )
Background:	Ubiquitin is a highly conserved nuclear and cytoplasmic protein that has a major role in targeting cellular proteins for degradation by the 26S proteasome. It is also involved in the maintenance of chromatin structure, the regulation of gene expression, and the stress response. Ubiquitin is synthesized as a precursor protein consisting of either polyubiquitin chains or a single ubiquitin moiety fused to an unrelated protein. This gene encodes a fusion protein consisting of ubiquitin at the N terminus and ribosomal protein L40 at the C terminus, a C-terminal extension protein (CEP). Multiple processed pseudogenes derived from this gene are present in the genome.
Molecular Weight:	14728
Gene ID:	7311
NCBI Accession:	<a href="#">NP_001029102</a> , <a href="#">NP_003324</a>
UniProt:	<a href="#">P62987</a>
Pathways:	<a href="#">Fc-epsilon Receptor Signaling Pathway</a> , <a href="#">EGFR Signaling Pathway</a> , <a href="#">Neurotrophin Signaling Pathway</a> , <a href="#">Activation of Innate immune Response</a> , <a href="#">Mitotic G1-G1/S Phases</a> , <a href="#">DNA Replication</a> , <a href="#">Toll-Like Receptors Cascades</a> , <a href="#">Synthesis of DNA</a> , <a href="#">EGFR Downregulation</a>

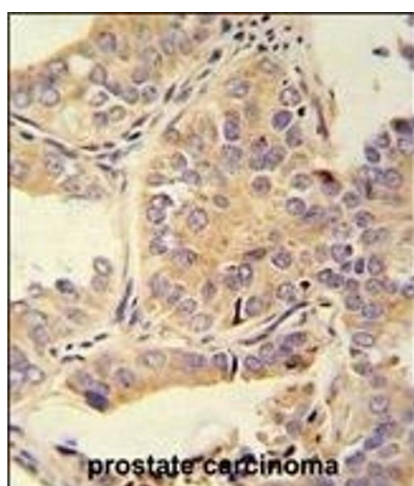
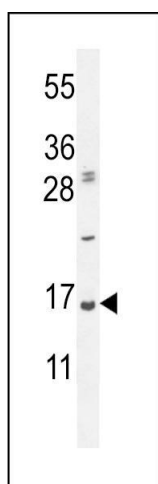
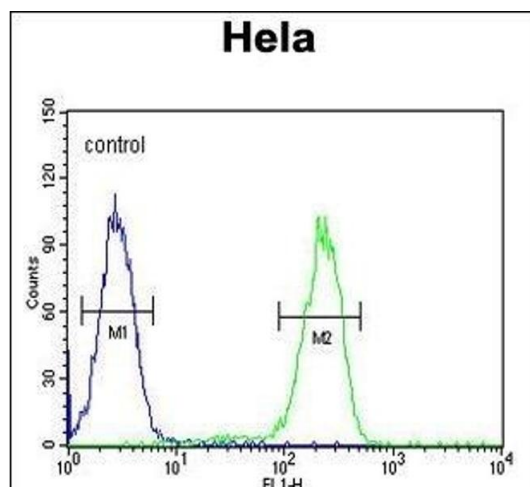
## Application Details

Application Notes:	WB: 1:1000. IHC-P: 1:50~100. FC: 1:10~50
Restrictions:	For Research Use only

## Handling

Format:	Liquid
Buffer:	Purified polyclonal antibody supplied in PBS with 0.09 % (W/V) sodium azide.
Preservative:	Sodium azide
Precaution of Use:	This product contains Sodium azide: a POISONOUS AND HAZARDOUS SUBSTANCE which should be handled by trained staff only.
Storage:	4 °C, -20 °C
Storage Comment:	Maintain refrigerated at 2-8 °C for up to 6 months. For long term storage store at -20 °C in small aliquots to prevent freeze-thaw cycles.

## Validation report #104401 for Cleavage Under Targets and Release Using Nuclease (CUT&amp;RUN)

**Flow Cytometry**

**Image 1.** UBA52 Antibody (C-Term) (ABIN654135 and ABIN2844007) flow cytometric analysis of Hela cells (right histogram) compared to a negative control cell (left histogram). FITC-conjugated goat-anti-rabbit secondary antibodies were used for the analysis.

**Western Blotting**

**Image 2.** UBA52 Antibody (C-Term) (ABIN654135 and ABIN2844007) western blot analysis in Hela cell line lysates (35 µg/lane). This demonstrates the UBA52 antibody detected the UBA52 protein (arrow).

**Immunohistochemistry (Paraffin-embedded Sections)**

**Image 3.** UBA52 antibody (C-Term) (ABIN654135 and ABIN2844007) immunohistochemistry analysis in formalin fixed and paraffin embedded human prostate carcinoma followed by peroxidase conjugation of the secondary antibody and DAB staining. This data demonstrates the use of the UBA52 antibody (C-Term) for immunohistochemistry. Clinical relevance has not been evaluated.