

Datasheet for ABIN654139

anti-Claudin 7 antibody (C-Term)

3 Images



[Go to Product page](#)

Overview

Quantity:	400 µL
Target:	Claudin 7 (CLDN7)
Binding Specificity:	AA 172-201, C-Term
Reactivity:	Human
Host:	Rabbit
Clonality:	Polyclonal
Conjugate:	This Claudin 7 antibody is un-conjugated
Application:	Western Blotting (WB), Immunohistochemistry (Paraffin-embedded Sections) (IHC (p)), Flow Cytometry (FACS)

Product Details

Immunogen:	This CLDN7 antibody is generated from rabbits immunized with a KLH conjugated synthetic peptide between 172-201 amino acids from the C-terminal region of human CLDN7.
Clone:	RB23672
Isotype:	Ig Fraction
Purification:	This antibody is purified through a protein A column, followed by peptide affinity purification.

Target Details

Target:	Claudin 7 (CLDN7)
Alternative Name:	CLDN7 (CLDN7 Products)

Target Details

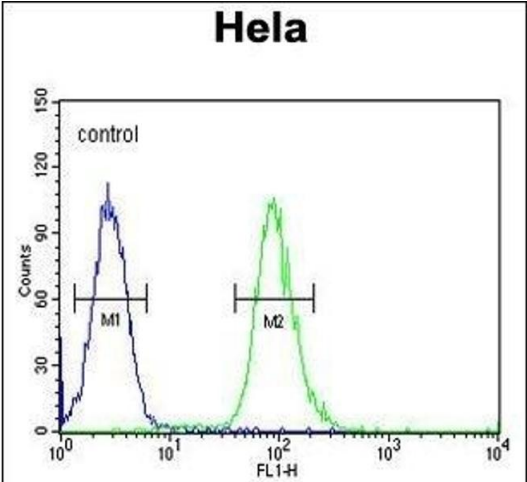
Background:	This gene encodes a member of the claudin family. Claudins are integral membrane proteins and components of tight junction strands. Tight junction strands serve as a physical barrier to prevent solutes and water from passing freely through the paracellular space between epithelial or endothelial cell sheets, and also play critical roles in maintaining cell polarity and signal transductions. Differential expression of this gene has been observed in different types of malignancies, including breast cancer, ovarian cancer, hepatocellular carcinomas, urinary tumors, prostate cancer, lung cancer, head and neck cancers, thyroid carcinomas, etc.. Alternatively spliced transcript variants encoding different isoforms have been found.
Molecular Weight:	22418
Gene ID:	1366
NCBI Accession:	NP_001171951 , NP_001171952 , NP_001298
UniProt:	O95471
Pathways:	Hepatitis C

Application Details

Application Notes:	WB: 1:1000. IHC-P: 1:50~100. FC: 1:10~50
Restrictions:	For Research Use only

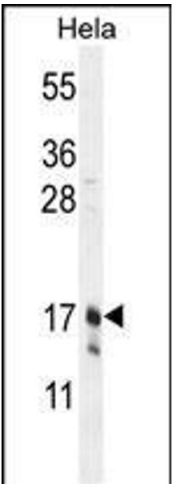
Handling

Format:	Liquid
Buffer:	Purified polyclonal antibody supplied in PBS with 0.09 % (W/V) sodium azide.
Preservative:	Sodium azide
Precaution of Use:	This product contains Sodium azide: a POISONOUS AND HAZARDOUS SUBSTANCE which should be handled by trained staff only.
Storage:	4 °C, -20 °C
Storage Comment:	Maintain refrigerated at 2-8 °C for up to 6 months. For long term storage store at -20 °C in small aliquots to prevent freeze-thaw cycles.
Expiry Date:	6 months



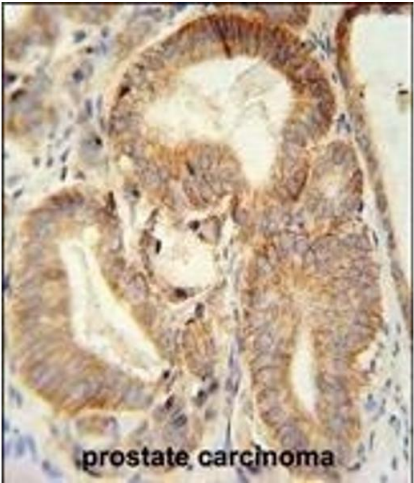
Flow Cytometry

Image 1. CLDN7 Antibody (C-term) (ABIN654139 and ABIN2844008) flow cytometric analysis of Hela cells (right histogram) compared to a negative control cell (left histogram). FITC-conjugated goat-anti-rabbit secondary antibodies were used for the analysis.



Western Blotting

Image 2. CLDN7 Antibody (C-term) (ABIN654139 and ABIN2844008) western blot analysis in Hela cell line lysates (35 µg/lane). This demonstrates the CLDN7 antibody detected the CLDN7 protein (arrow).



Immunohistochemistry (Paraffin-embedded Sections)

Image 3. CLDN7 antibody (C-term) (ABIN654139 and ABIN2844008) immunohistochemistry analysis in formalin fixed and paraffin embedded human prostate carcinoma followed by peroxidase conjugation of the secondary antibody and DAB staining. This data demonstrates the use of the CLDN7 antibody (C-term) for immunohistochemistry. Clinical relevance has not been evaluated.