



[Go to Product page](#)

Datasheet for ABIN654156
anti-GCC2 antibody (C-Term)

2 Images

Overview

Quantity:	400 µL
Target:	GCC2
Binding Specificity:	AA 1581-1609, C-Term
Reactivity:	Human, Mouse
Host:	Rabbit
Clonality:	Polyclonal
Conjugate:	This GCC2 antibody is un-conjugated
Application:	Western Blotting (WB), Immunohistochemistry (Paraffin-embedded Sections) (IHC (p))

Product Details

Immunogen:	This GCC2 antibody is generated from rabbits immunized with a KLH conjugated synthetic peptide between 1581-1609 amino acids from the C-terminal region of human GCC2.
Clone:	RB24093
Isotype:	Ig Fraction
Predicted Reactivity:	Rat
Purification:	This antibody is purified through a protein A column, followed by peptide affinity purification.

Target Details

Target:	GCC2
Alternative Name:	GCC2 (GCC2 Products)

Target Details

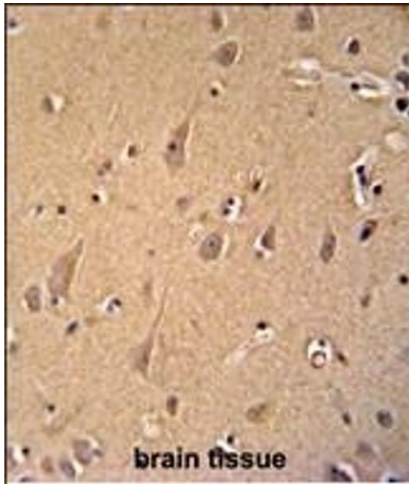
Background:	The protein encoded by this gene is a peripheral membrane protein localized to the trans-Golgi network. It is sensitive to brefeldin A. This encoded protein contains a GRIP domain which is thought to be used in targeting. Alternative splicing results in multiple transcript variants.
Molecular Weight:	195910
Gene ID:	9648
NCBI Accession:	NP_852118
UniProt:	Q8IWIJ2
Pathways:	Maintenance of Protein Location , SARS-CoV-2 Protein Interactome

Application Details

Application Notes:	WB: 1:1000. IHC-P: 1:50~100
Restrictions:	For Research Use only

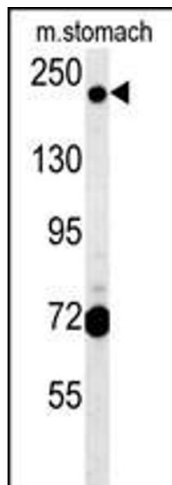
Handling

Format:	Liquid
Buffer:	Purified polyclonal antibody supplied in PBS with 0.09 % (W/V) sodium azide.
Preservative:	Sodium azide
Precaution of Use:	This product contains Sodium azide: a POISONOUS AND HAZARDOUS SUBSTANCE which should be handled by trained staff only.
Storage:	4 °C,-20 °C
Storage Comment:	Maintain refrigerated at 2-8 °C for up to 6 months. For long term storage store at -20 °C in small aliquots to prevent freeze-thaw cycles.
Expiry Date:	6 months



Immunohistochemistry (Paraffin-embedded Sections)

Image 1. GCC2 antibody (C-term) (ABIN654156 and ABIN2844023) immunohistochemistry analysis in formalin fixed and paraffin embedded human brain tissue followed by peroxidase conjugation of the secondary antibody and DAB staining. This data demonstrates the use of the GCC2 antibody (C-term) for immunohistochemistry. Clinical relevance has not been evaluated.



Western Blotting

Image 2. GCC2 Antibody (C-term) (ABIN654156 and ABIN2844023) western blot analysis in mouse stomach tissue lysates (15 µg/lane). This demonstrates the GCC2 antibody detected GCC2 protein (arrow).