

Datasheet for ABIN654161  
**anti-EXOC8 antibody (AA 360-389)**



[Go to Product page](#)

1 Image

### Overview

Quantity:	400 µL
Target:	EXOC8 (EX084)
Binding Specificity:	AA 360-389
Reactivity:	Human, Mouse
Host:	Rabbit
Clonality:	Polyclonal
Conjugate:	This EXOC8 antibody is un-conjugated
Application:	Western Blotting (WB)

### Product Details

Immunogen:	This EXOC8 antibody is generated from rabbits immunized with a KLH conjugated synthetic peptide between 360-389 amino acids from the Central region of human EXOC8.
Clone:	RB24184
Isotype:	Ig Fraction
Purification:	This antibody is purified through a protein A column, followed by peptide affinity purification.

### Target Details

Target:	EXOC8 (EX084)
Alternative Name:	EXOC8 ( <a href="#">EX084 Products</a> )
Molecular Weight:	81799

## Target Details

Gene ID:	149371
NCBI Accession:	<a href="#">NP_787072</a>
UniProt:	<a href="#">Q8IYI6</a>
Pathways:	<a href="#">Peptide Hormone Metabolism</a>

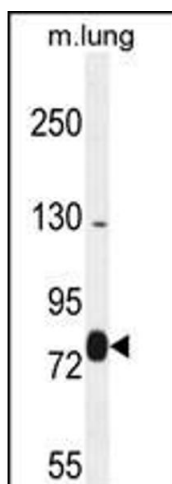
## Application Details

Application Notes:	WB: 1:1000
Restrictions:	For Research Use only

## Handling

Format:	Liquid
Buffer:	Purified polyclonal antibody supplied in PBS with 0.09 % (W/V) sodium azide.
Preservative:	Sodium azide
Precaution of Use:	This product contains Sodium azide: a POISONOUS AND HAZARDOUS SUBSTANCE which should be handled by trained staff only.
Storage:	4 °C,-20 °C
Storage Comment:	Maintain refrigerated at 2-8 °C for up to 6 months. For long term storage store at -20 °C in small aliquots to prevent freeze-thaw cycles.
Expiry Date:	6 months

## Images



### Western Blotting

**Image 1.** EXOC8 Antibody (Center) (ABIN654161 and ABIN2844025) western blot analysis in mouse lung tissue lysates (35 µg/lane). This demonstrates the EXOC8 antibody detected the EXOC8 protein (arrow).