

Datasheet for ABIN654166  
**anti-SPARCL1 antibody (AA 208-236)**[Go to Product page](#)

## 2 Images

## Overview

Quantity:	400 µL
Target:	SPARCL1
Binding Specificity:	AA 208-236
Reactivity:	Human
Host:	Rabbit
Clonality:	Polyclonal
Conjugate:	This SPARCL1 antibody is un-conjugated
Application:	Western Blotting (WB), Immunohistochemistry (Paraffin-embedded Sections) (IHC (p))

## Product Details

Immunogen:	This SPARCL1 antibody is generated from rabbits immunized with a KLH conjugated synthetic peptide between 208-236 amino acids from the Central region of human SPARCL1.
Clone:	RB24552
Isotype:	Ig Fraction
Purification:	This antibody is purified through a protein A column, followed by peptide affinity purification.

## Target Details

Target:	SPARCL1
Alternative Name:	SPARCL1 ( <a href="#">SPARCL1 Products</a> )
Molecular Weight:	75208

## Target Details

Gene ID:	8404
NCBI Accession:	<a href="#">NP_001121782</a> , <a href="#">NP_004675</a>
UniProt:	<a href="#">Q14515</a>

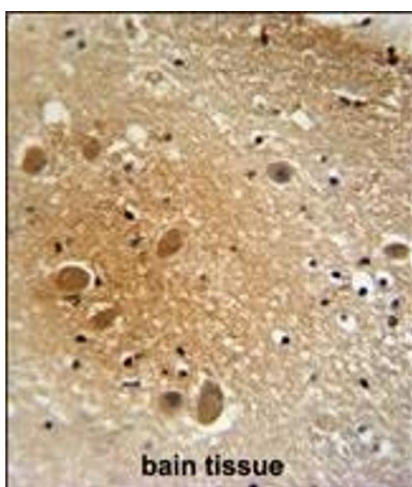
## Application Details

Application Notes:	WB: 1:1000. IHC-P: 1:50~100
Restrictions:	For Research Use only

## Handling

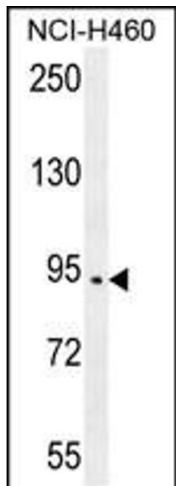
Format:	Liquid
Buffer:	Purified polyclonal antibody supplied in PBS with 0.09 % (W/V) sodium azide.
Preservative:	Sodium azide
Precaution of Use:	This product contains Sodium azide: a POISONOUS AND HAZARDOUS SUBSTANCE which should be handled by trained staff only.
Storage:	4 °C,-20 °C
Storage Comment:	Maintain refrigerated at 2-8 °C for up to 6 months. For long term storage store at -20 °C in small aliquots to prevent freeze-thaw cycles.
Expiry Date:	6 months

## Images



### Immunohistochemistry (Paraffin-embedded Sections)

**Image 1.** SRCL1 antibody (Center) (ABIN654166 and ABIN2844028) immunohistochemistry analysis in formalin fixed and raffin embedded human brain tissue followed by peroxidase conjugation of the secondary antibody and DAB staining. This data demonstrates the use of the SRCL1 antibody (Center) for immunohistochemistry. Clinical relevance has not been evaluated.



Western Blotting

**Image 2.** SRCL1 Antibody (Center) (ABIN654166 and ABIN2844028) western blot analysis in NCI- cell line lysates (35 µg/lane). This demonstrates the SRCL1 antibody detected the SRCL1 protein (arrow).