



[Go to Product page](#)

Datasheet for ABIN654172

## anti-GABBR2 antibody (C-Term)

### 3 Images

#### Overview

Quantity:	400 µL
Target:	GABBR2
Binding Specificity:	AA 861-890, C-Term
Reactivity:	Human, Mouse
Host:	Rabbit
Clonality:	Polyclonal
Conjugate:	This GABBR2 antibody is un-conjugated
Application:	Western Blotting (WB), Immunohistochemistry (Paraffin-embedded Sections) (IHC (p))

#### Product Details

Immunogen:	This GABBR2 antibody is generated from rabbits immunized with a KLH conjugated synthetic peptide between 861-890 amino acids from the C-terminal region of human GABBR2.
Clone:	RB24610
Isotype:	Ig Fraction
Predicted Reactivity:	Rat
Purification:	This antibody is purified through a protein A column, followed by peptide affinity purification.

#### Target Details

Target:	GABBR2
Alternative Name:	GABBR2 ( <a href="#">GABBR2 Products</a> )

## Target Details

---

Background:	The multi-pass membrane protein encoded by this gene belongs to the G-protein coupled receptor 3 family and GABA-B receptor subfamily. The GABA-B receptors inhibit neuronal activity through G protein-coupled second-messenger systems, which regulate the release of neurotransmitters, and the activity of ion channels and adenylyl cyclase. This receptor subunit forms an active heterodimeric complex with GABA-B receptor subunit 1, neither of which is effective on its own. Allelic variants of this gene have been associated with nicotine dependence.
Molecular Weight:	105821
Gene ID:	9568
NCBI Accession:	<a href="#">NP_005449</a>
UniProt:	<a href="#">O75899</a>
Pathways:	<a href="#">cAMP Metabolic Process</a>

## Application Details

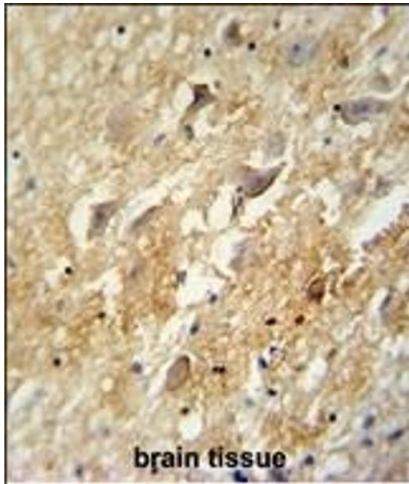
---

Application Notes:	WB: 1:1000. WB: 1:1000. IHC-P: 1:50~100
Restrictions:	For Research Use only

## Handling

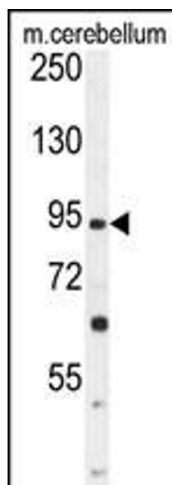
---

Format:	Liquid
Buffer:	Purified polyclonal antibody supplied in PBS with 0.09 % (W/V) sodium azide.
Preservative:	Sodium azide
Precaution of Use:	This product contains Sodium azide: a POISONOUS AND HAZARDOUS SUBSTANCE which should be handled by trained staff only.
Storage:	4 °C,-20 °C
Storage Comment:	Maintain refrigerated at 2-8 °C for up to 6 months. For long term storage store at -20 °C in small aliquots to prevent freeze-thaw cycles.
Expiry Date:	6 months



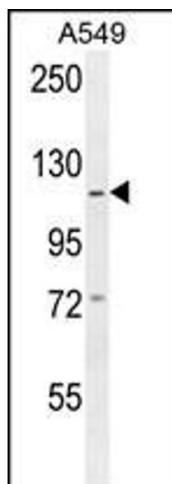
### Immunohistochemistry (Paraffin-embedded Sections)

**Image 1.** GABBR2 antibody (C-term) (ABIN654172 and ABIN2844031) immunohistochemistry analysis in formalin fixed and paraffin embedded human brain tissue followed by peroxidase conjugation of the secondary antibody and DAB staining. This data demonstrates the use of the GABBR2 antibody (C-term) for immunohistochemistry. Clinical relevance has not been evaluated.



### Western Blotting

**Image 2.** GABBR2 Antibody (C-term) (ABIN654172 and ABIN2844031) western blot analysis in mouse cerebellum tissue lysates (35 µg/lane). This demonstrates the GABBR2 antibody detected the GABBR2 protein (arrow).



### Western Blotting

**Image 3.** GABBR2 Antibody (C-term) (ABIN654172 and ABIN2844031) western blot analysis in A549 cell line lysates (35 µg/lane). This demonstrates the GABBR2 antibody detected the GABBR2 protein (arrow).