

Datasheet for ABIN654174
anti-GGTLC2 antibody (AA 127-154)[Go to Product page](#)

3 Images

Overview

Quantity:	400 µL
Target:	GGTLC2
Binding Specificity:	AA 127-154
Reactivity:	Human
Host:	Rabbit
Clonality:	Polyclonal
Conjugate:	This GGTLC2 antibody is un-conjugated
Application:	Western Blotting (WB), Flow Cytometry (FACS), Immunohistochemistry (Paraffin-embedded Sections) (IHC (p))

Product Details

Immunogen:	This GGTLC2 antibody is generated from rabbits immunized with a KLH conjugated synthetic peptide between 127-154 amino acids from the Central region of human GGTLC2.
Clone:	RB24615
Isotype:	Ig Fraction
Predicted Reactivity:	M, Pig, Rat
Purification:	This antibody is purified through a protein A column, followed by peptide affinity purification.

Target Details

Target:	GGTLC2
---------	--------

Target Details

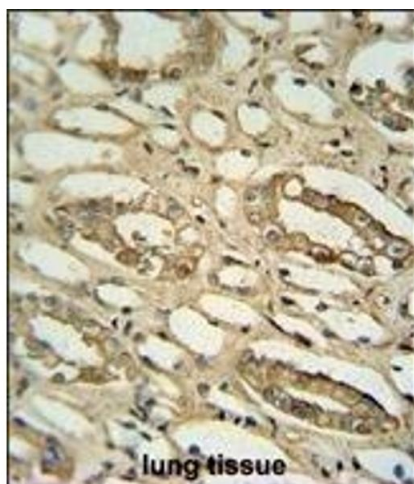
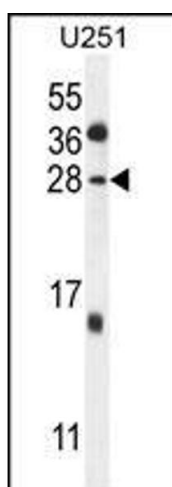
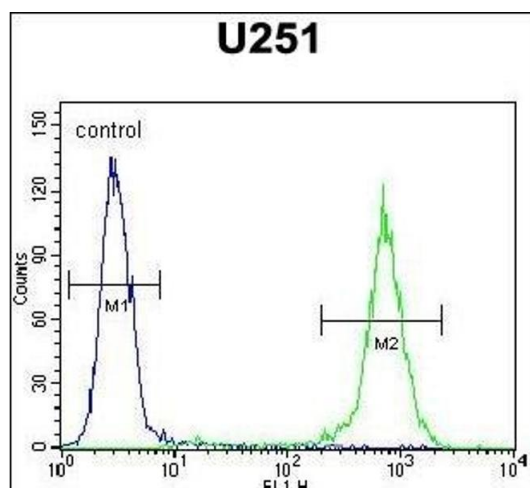
Alternative Name:	GGTLC2 (GGTLC2 Products)
Background:	Gamma-glutamyltransferase-1 (GGT1, MIM 612346) is a membrane-bound extracellular enzyme that cleaves gamma-glutamyl peptide bonds in glutathione and other peptides and transfers the gamma-glutamyl moiety to acceptors. Autocatalytic cleavage of the GGT1 precursor polypeptide produces a heavy chain and a light chain that associate with each other to form the functional enzyme. Light chain-only GGTs, such as GGTLC2, contain a region corresponding to the GGT1 light chain, but they lack the membrane-anchoring heavy chain region (Heisterkamp et al., 2008 [PubMed 18357469]).[supplied by OMIM].
Molecular Weight:	23661
Gene ID:	91227
NCBI Accession:	NP_954578
UniProt:	Q14390

Application Details

Application Notes:	WB: 1:1000. IHC-P: 1:50~100. FC: 1:10~50
Restrictions:	For Research Use only

Handling

Format:	Liquid
Buffer:	Purified polyclonal antibody supplied in PBS with 0.09 % (W/V) sodium azide.
Preservative:	Sodium azide
Precaution of Use:	This product contains Sodium azide: a POISONOUS AND HAZARDOUS SUBSTANCE which should be handled by trained staff only.
Storage:	4 °C,-20 °C
Storage Comment:	Maintain refrigerated at 2-8 °C for up to 6 months. For long term storage store at -20 °C in small aliquots to prevent freeze-thaw cycles.
Expiry Date:	6 months



Flow Cytometry

Image 1. GGTL2 Antibody (Center) (ABIN654174 and ABIN2844032) flow cytometric analysis of cells (right histogram) compared to a negative control cell (left histogram). FITC-conjugated goat-anti-rabbit secondary antibodies were used for the analysis.

Western Blotting

Image 2. GGTL2 Antibody (Center) (ABIN654174 and ABIN2844032) western blot analysis in cell line lysates (35 μ g/lane). This demonstrates the GGTL2 antibody detected the GGTL2 protein (arrow).

Immunohistochemistry (Paraffin-embedded Sections)

Image 3. GGTL2 antibody (Center) (ABIN654174 and ABIN2844032) immunohistochemistry analysis in formalin fixed and paraffin embedded human lung tissue followed by peroxidase conjugation of the secondary antibody and DAB staining. This data demonstrates the use of the GGTL2 antibody (Center) for immunohistochemistry. Clinical relevance has not been evaluated.