

Datasheet for ABIN654178
anti-GTPBP2 antibody (C-Term)

5 Images

[Go to Product page](#)

Overview

Quantity:	400 µL
Target:	GTPBP2
Binding Specificity:	AA 536-564, C-Term
Reactivity:	Human, Mouse, Hamster
Host:	Rabbit
Clonality:	Polyclonal
Conjugate:	This GTPBP2 antibody is un-conjugated
Application:	Western Blotting (WB), Flow Cytometry (FACS), Immunohistochemistry (Paraffin-embedded Sections) (IHC (p))

Product Details

Immunogen:	This GTPBP2 antibody is generated from rabbits immunized with a KLH conjugated synthetic peptide between 536-564 amino acids from the C-terminal region of human GTPBP2.
Clone:	RB24638
Isotype:	Ig Fraction
Purification:	This antibody is purified through a protein A column, followed by peptide affinity purification.

Target Details

Target:	GTPBP2
Alternative Name:	GTPBP2 (GTPBP2 Products)

Target Details

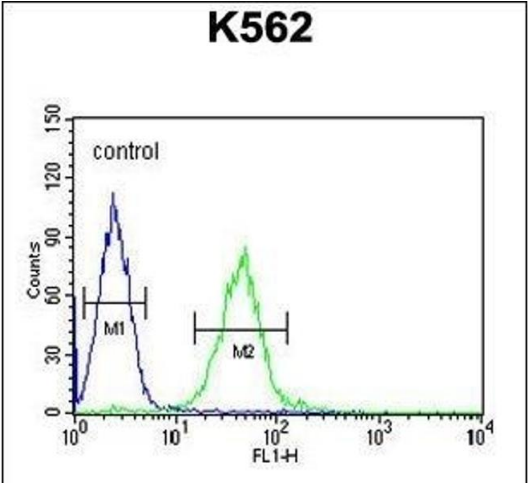
Background:	GTP-binding proteins, or G proteins, constitute a superfamily capable of binding GTP or GDP. G proteins are activated by binding GTP and are inactivated by hydrolyzing GTP to GDP. This general mechanism enables G proteins to perform a wide range of biologic activities.
Molecular Weight:	65768
Gene ID:	54676
NCBI Accession:	NP_061969
UniProt:	Q9BX10

Application Details

Application Notes:	WB: 1:1000. WB: 1:1000. WB: 1:1000. IHC-P: 1:50~100. FC: 1:10~50
Restrictions:	For Research Use only

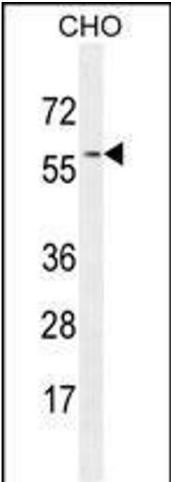
Handling

Format:	Liquid
Buffer:	Purified polyclonal antibody supplied in PBS with 0.09 % (W/V) sodium azide.
Preservative:	Sodium azide
Precaution of Use:	This product contains Sodium azide: a POISONOUS AND HAZARDOUS SUBSTANCE which should be handled by trained staff only.
Storage:	4 °C, -20 °C
Storage Comment:	Maintain refrigerated at 2-8 °C for up to 6 months. For long term storage store at -20 °C in small aliquots to prevent freeze-thaw cycles.
Expiry Date:	6 months



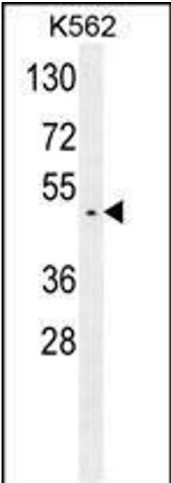
Flow Cytometry

Image 1. GTPBP2 Antibody (C-term) (ABIN654178 and ABIN2844034) flow cytometric analysis of K562 cells (right histogram) compared to a negative control cell (left histogram). FITC-conjugated goat-anti-rabbit secondary antibodies were used for the analysis.



Western Blotting

Image 2. GTPBP2 Antibody (C-term) (ABIN654178 and ABIN2844034) western blot analysis in CHO cell line lysates (35 µg/lane). This demonstrates the GTPBP2 antibody detected the GTPBP2 protein (arrow).



Western Blotting

Image 3. GTPBP2 Antibody (C-term) (ABIN654178 and ABIN2844034) western blot analysis in K562 cell line lysates (35 µg/lane). This demonstrates the GTPBP2 antibody detected the GTPBP2 protein (arrow).

Please check the [product details page](#) for more images. Overall 5 images are available for ABIN654178.