

Datasheet for ABIN654187
anti-KATNAL1 antibody (N-Term)

3 Images

[Go to Product page](#)

Overview

Quantity:	400 µL
Target:	KATNAL1
Binding Specificity:	AA 137-166, N-Term
Reactivity:	Human
Host:	Rabbit
Clonality:	Polyclonal
Conjugate:	This KATNAL1 antibody is un-conjugated
Application:	Western Blotting (WB), Flow Cytometry (FACS), Immunohistochemistry (Paraffin-embedded Sections) (IHC (p))

Product Details

Immunogen:	This KATL1 antibody is generated from rabbits immunized with a KLH conjugated synthetic peptide between 137-166 amino acids from the N-terminal region of human KATL1.
Clone:	RB25398
Isotype:	Ig Fraction
Purification:	This antibody is purified through a protein A column, followed by peptide affinity purification.

Target Details

Target:	KATNAL1
Alternative Name:	KATL1 (KATNAL1 Products)

Target Details

Molecular Weight:	55392
Gene ID:	84056
NCBI Accession:	NP_001014402 , NP_115492
UniProt:	Q9BW62

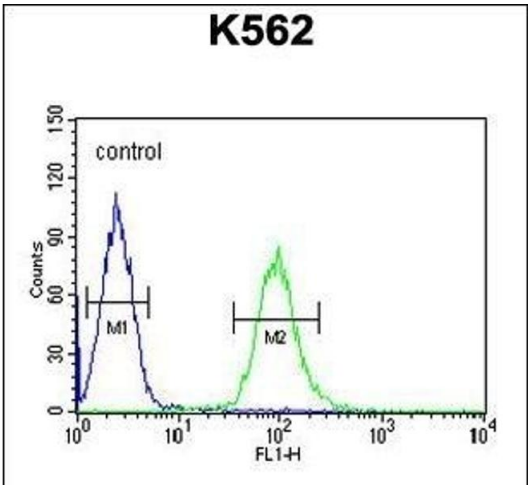
Application Details

Application Notes:	WB: 1:1000. IHC-P: 1:50~100. FC: 1:10~50
Restrictions:	For Research Use only

Handling

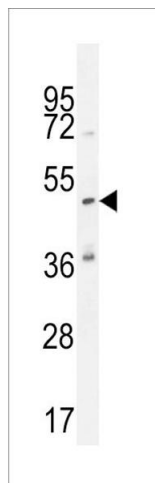
Format:	Liquid
Buffer:	Purified polyclonal antibody supplied in PBS with 0.09 % (W/V) sodium azide.
Preservative:	Sodium azide
Precaution of Use:	This product contains Sodium azide: a POISONOUS AND HAZARDOUS SUBSTANCE which should be handled by trained staff only.
Storage:	4 °C, -20 °C
Storage Comment:	Maintain refrigerated at 2-8 °C for up to 6 months. For long term storage store at -20 °C in small aliquots to prevent freeze-thaw cycles.
Expiry Date:	6 months

Images



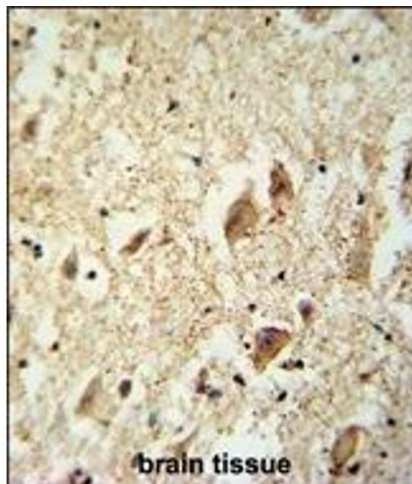
Flow Cytometry

Image 1. KATL1 Antibody (N-term) (ABIN654187 and ABIN2844038) flow cytometric analysis of K562 cells (right histogram) compared to a negative control cell (left histogram). FITC-conjugated goat-anti-rabbit secondary antibodies were used for the analysis.



Western Blotting

Image 2. KATL1 Antibody (N-term) (ABIN654187 and ABIN2844038) western blot analysis in K562 cell line lysates (35 µg/lane). This demonstrates the KATL1 antibody detected the KATL1 protein (arrow).



Immunohistochemistry (Paraffin-embedded Sections)

Image 3. KATL1 antibody (N-term) (ABIN654187 and ABIN2844038) immunohistochemistry analysis in formalin fixed and paraffin embedded human brain tissue followed by peroxidase conjugation of the secondary antibody and DAB staining. This data demonstrates the use of the KATL1 antibody (N-term) for immunohistochemistry. Clinical relevance has not been evaluated.