

Datasheet for ABIN654190

anti-Claudin 22 (CLDN22) (AA 90-117) antibody[Go to Product page](#)**3** Images

Overview

Quantity:	400 µL
Target:	Claudin 22 (CLDN22)
Binding Specificity:	AA 90-117
Reactivity:	Human, Mouse
Host:	Rabbit
Clonality:	Polyclonal
Conjugate:	Un-conjugated
Application:	Western Blotting (WB), Flow Cytometry (FACS)

Product Details

Immunogen:	This CLDN22 antibody is generated from rabbits immunized with a KLH conjugated synthetic peptide between 90-117 amino acids of human CLDN22.
Clone:	RB25720
Isotype:	IgG
Purification:	This antibody is purified through a protein A column, followed by peptide affinity purification.

Target Details

Target:	Claudin 22 (CLDN22)
Alternative Name:	CLDN22 (CLDN22 Products)
Background:	This gene encodes a member of the claudin family. Claudins are integral membrane proteins

Target Details

and components of tight junction strands. Tight junction strands serve as a physical barrier to prevent solutes and water from passing freely through the paracellular space between epithelial or endothelial cell sheets, and also play critical roles in maintaining cell polarity and signal transductions. This gene is intronless and overlaps the 3' UTR of the WWC2 gene (GenelD: 80014) on the opposite strand.

Molecular Weight: 24509

Gene ID: 53842

NCBI Accession: [NP_001104789](#)

UniProt: [Q8N7P3](#)

Pathways: [Cell-Cell Junction Organization](#), [Hepatitis C](#)

Application Details

Application Notes: WB: 1:1000. WB: 1:1000. FC: 1:10~50

Restrictions: For Research Use only

Handling

Format: Liquid

Buffer: Purified polyclonal antibody supplied in PBS with 0.09 % (W/V) sodium azide.

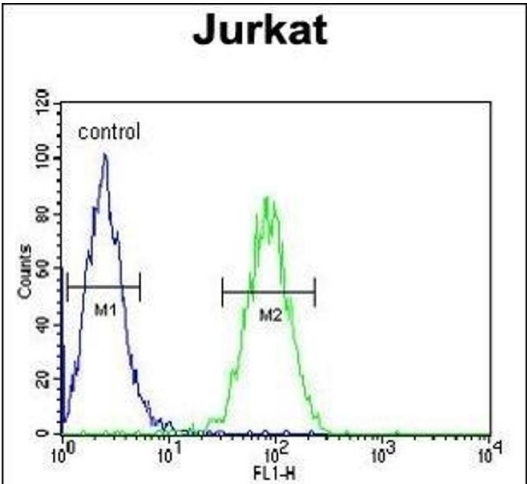
Preservative: Sodium azide

Precaution of Use: This product contains Sodium azide: a POISONOUS AND HAZARDOUS SUBSTANCE which should be handled by trained staff only.

Storage: 4 °C, -20 °C

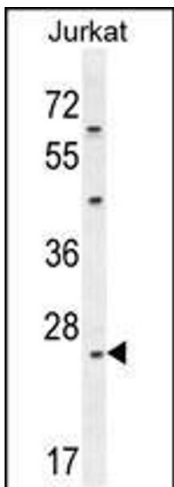
Storage Comment: Maintain refrigerated at 2-8 °C for up to 6 months. For long term storage store at -20 °C in small aliquots to prevent freeze-thaw cycles.

Expiry Date: 6 months



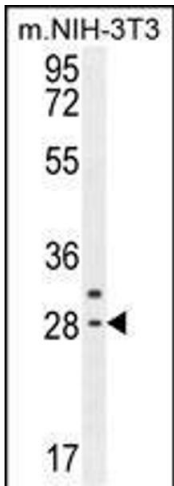
Flow Cytometry

Image 1. CLDN22 Antibody (Center) (ABIN654190 and ABIN2844042) flow cytometric analysis of Jurkat cells (right histogram) compared to a negative control (left histogram). FITC-conjugated goat-anti-rabbit secondary antibodies were used for the analysis.



Western Blotting

Image 2. CLDN22 Antibody (Center) (ABIN654190 and ABIN2844042) western blot analysis in Jurkat cell line lysates (35 µg/lane). This demonstrates the CLDN22 antibody detected the CLDN22 protein (arrow).



Western Blotting

Image 3. CLDN22 Antibody (Center) (ABIN654190 and ABIN2844042) western blot analysis in mouse NIH-3T3 cell line lysates (35 µg/lane). This demonstrates the CLDN22 antibody detected the CLDN22 protein (arrow).