

Datasheet for ABIN654192  
**anti-GAS2L1 antibody (C-Term)**[Go to Product page](#)

## 2 Images

## Overview

Quantity:	400 µL
Target:	GAS2L1
Binding Specificity:	AA 618-646, C-Term
Reactivity:	Human
Host:	Rabbit
Clonality:	Polyclonal
Conjugate:	This GAS2L1 antibody is un-conjugated
Application:	Western Blotting (WB), Flow Cytometry (FACS)

## Product Details

Immunogen:	This GAS2L1 antibody is generated from rabbits immunized with a KLH conjugated synthetic peptide between 618-646 amino acids from the C-terminal region of human GAS2L1.
Clone:	RB26772
Isotype:	Ig Fraction
Predicted Reactivity:	M
Purification:	This antibody is purified through a protein A column, followed by peptide affinity purification.

## Target Details

Target:	GAS2L1
Alternative Name:	GAS2L1 ( <a href="#">GAS2L1 Products</a> )

## Target Details

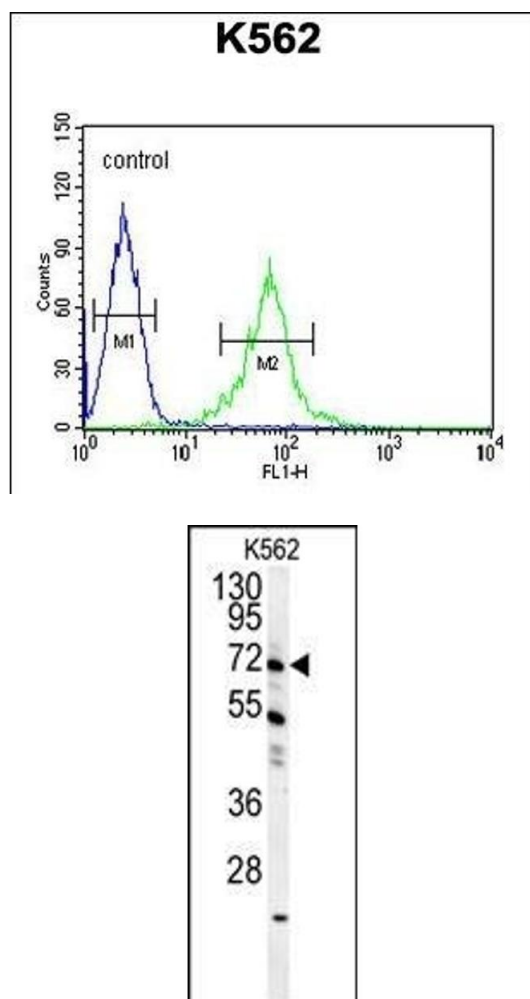
Background:	The protein encoded by this gene, a member of the GAS2 family, is similar in sequence to the mouse protein Gas2, an actin-associated protein expressed at high levels in growth-arrested cells. Expression of the mouse Gas2 gene is negatively regulated by serum and growth factors. Three transcript variants encoding two different isoforms have been found for this gene.
Molecular Weight:	72717
Gene ID:	10634
NCBI Accession:	<a href="#">NP_006469</a> , <a href="#">NP_689422</a>
UniProt:	<a href="#">Q99501</a>

## Application Details

Application Notes:	WB: 1:1000. FC: 1:10~50
Restrictions:	For Research Use only

## Handling

Format:	Liquid
Buffer:	Purified polyclonal antibody supplied in PBS with 0.09 % (W/V) sodium azide.
Preservative:	Sodium azide
Precaution of Use:	This product contains Sodium azide: a POISONOUS AND HAZARDOUS SUBSTANCE which should be handled by trained staff only.
Storage:	4 °C, -20 °C
Storage Comment:	Maintain refrigerated at 2-8 °C for up to 6 months. For long term storage store at -20 °C in small aliquots to prevent freeze-thaw cycles.
Expiry Date:	6 months



### Flow Cytometry

**Image 1.** GAS2L1 Antibody (C-term) (ABIN654192 and ABIN2844043) flow cytometric analysis of K562 cells (right histogram) compared to a negative control cell (left histogram). FITC-conjugated goat-anti-rabbit secondary antibodies were used for the analysis.

### Western Blotting

**Image 2.** GAS2L1 Antibody (C-term) (ABIN654192 and ABIN2844043) western blot analysis in K562 cell line lysates (35  $\mu$ g/lane). This demonstrates the GAS2L1 antibody detected the GAS2L1 protein (arrow).