

Datasheet for ABIN654199
anti-KRI1 antibody (N-Term)[Go to Product page](#)

2 Images

Overview

Quantity:	400 µL
Target:	KRI1
Binding Specificity:	AA 12-41, N-Term
Reactivity:	Human
Host:	Rabbit
Clonality:	Polyclonal
Conjugate:	This KRI1 antibody is un-conjugated
Application:	Western Blotting (WB), Immunohistochemistry (Paraffin-embedded Sections) (IHC (p))

Product Details

Immunogen:	This KRI1 antibody is generated from rabbits immunized with a KLH conjugated synthetic peptide between 12-41 amino acids from the N-terminal region of human KRI1.
Clone:	RB27023
Isotype:	Ig Fraction
Purification:	This antibody is purified through a protein A column, followed by peptide affinity purification.

Target Details

Target:	KRI1
Alternative Name:	KRI1 (KRI1 Products)
Background:	This gene overlaps with the gene for cysteine endopeptidase AUT-like 4 in a head-to-tail

Target Details

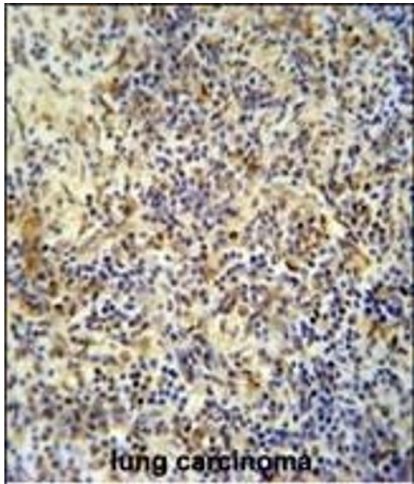
	orientation. [provided by RefSeq].
Molecular Weight:	82598
Gene ID:	65095
NCBI Accession:	NP_075384
UniProt:	Q8N9T8

Application Details

Application Notes:	WB: 1:1000. IHC-P: 1:50~100
Restrictions:	For Research Use only

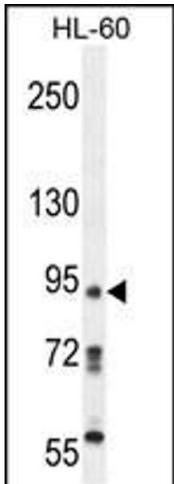
Handling

Format:	Liquid
Buffer:	Purified polyclonal antibody supplied in PBS with 0.09 % (W/V) sodium azide.
Preservative:	Sodium azide
Precaution of Use:	This product contains Sodium azide: a POISONOUS AND HAZARDOUS SUBSTANCE which should be handled by trained staff only.
Storage:	4 °C,-20 °C
Storage Comment:	Maintain refrigerated at 2-8 °C for up to 6 months. For long term storage store at -20 °C in small aliquots to prevent freeze-thaw cycles.
Expiry Date:	6 months



Immunohistochemistry (Paraffin-embedded Sections)

Image 1. KRI1 antibody (N-term) (ABIN654199 and ABIN2844048) immunohistochemistry analysis in formalin fixed and paraffin embedded human lung carcinoma followed by peroxidase conjugation of the secondary antibody and DAB staining. This data demonstrates the use of the KRI1 antibody (N-term) for immunohistochemistry. Clinical relevance has not been evaluated.



Western Blotting

Image 2. KRI1 Antibody (N-term) (ABIN654199 and ABIN2844048) western blot analysis in HL-60 cell line lysates (35 µg/lane). This demonstrates the EKI2 antibody detected the EKI2 protein (arrow).