

Datasheet for ABIN654226
anti-FBXW12 antibody (C-Term)

3 Images

[Go to Product page](#)

Overview

Quantity:	400 µL
Target:	FBXW12
Binding Specificity:	AA 291-320, C-Term
Reactivity:	Human
Host:	Rabbit
Clonality:	Polyclonal
Conjugate:	This FBXW12 antibody is un-conjugated
Application:	Western Blotting (WB), Flow Cytometry (FACS), Immunohistochemistry (Paraffin-embedded Sections) (IHC (p))

Product Details

Immunogen:	This FBXW12 antibody is generated from rabbits immunized with a KLH conjugated synthetic peptide between 291-320 amino acids from the C-terminal region of human FBXW12.
Clone:	RB27619
Isotype:	Ig Fraction
Purification:	This antibody is purified through a protein A column, followed by peptide affinity purification.

Target Details

Target:	FBXW12
Alternative Name:	FBXW12 (FBXW12 Products)

Target Details

Background: Members of the F-box protein family, such as FBXW12, are characterized by an approximately 40-amino acid F-box motif. SCF complexes, formed by SKP1 (MIM 601434), cullin (see CUL1, MIM 603034), and F-box proteins, act as protein-ubiquitin ligases. F-box proteins interact with SKP1 through the F box, and they interact with ubiquitination targets through other protein interaction domains (Jin et al., 2004 [PubMed 15520277]).[supplied by OMIM].

Gene ID: 285231

NCBI Accession: [NP_001153399](#), [NP_001153401](#), [NP_996985](#)

UniProt: [Q6X9E4](#)

Application Details

Application Notes: WB: 1:1000. IHC-P: 1:50~100. FC: 1:10~50

Restrictions: For Research Use only

Handling

Format: Liquid

Buffer: Purified polyclonal antibody supplied in PBS with 0.09 % (W/V) sodium azide.

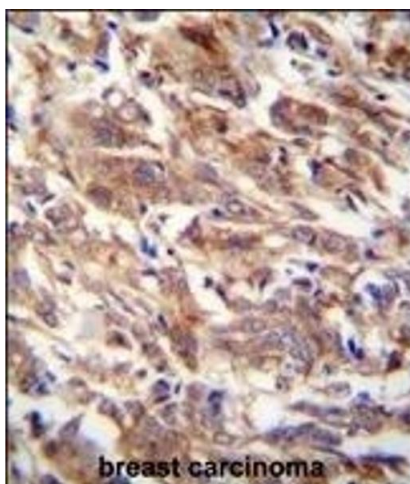
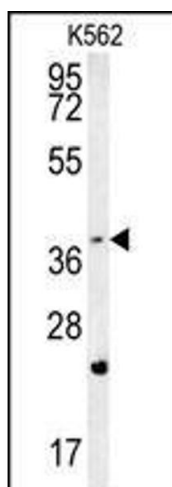
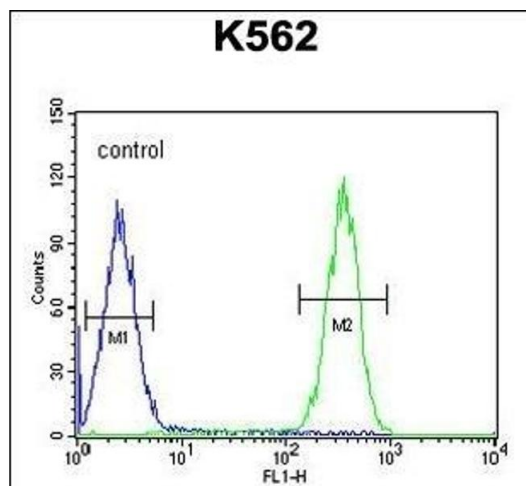
Preservative: Sodium azide

Precaution of Use: This product contains Sodium azide: a POISONOUS AND HAZARDOUS SUBSTANCE which should be handled by trained staff only.

Storage: 4 °C, -20 °C

Storage Comment: Maintain refrigerated at 2-8 °C for up to 6 months. For long term storage store at -20 °C in small aliquots to prevent freeze-thaw cycles.

Expiry Date: 6 months



Flow Cytometry

Image 1. FBXW12 Antibody (C-term) (ABIN654226 and ABIN2844060) flow cytometric analysis of K562 cells (right histogram) compared to a negative control cell (left histogram). FITC-conjugated goat-anti-rabbit secondary antibodies were used for the analysis.

Western Blotting

Image 2. FBXW12 Antibody (C-term) (ABIN654226 and ABIN2844060) western blot analysis in K562 cell line lysates (35 µg/lane). This demonstrates the FBXW12 antibody detected the FBXW12 protein (arrow).

Immunohistochemistry (Paraffin-embedded Sections)

Image 3. FBXW12 Antibody (C-term) (ABIN654226 and ABIN2844060) immunohistochemistry analysis in formalin fixed and paraffin embedded human breast carcinoma followed by peroxidase conjugation of the secondary antibody and DAB staining. This data demonstrates the use of the FBXW12 Antibody (C-term) for immunohistochemistry. Clinical relevance has not been evaluated.