

Datasheet for ABIN654230
anti-LNPEP antibody (N-Term)

3 Images

[Go to Product page](#)

Overview

Quantity:	400 µL
Target:	LNPEP
Binding Specificity:	AA 23-52, N-Term
Reactivity:	Human
Host:	Rabbit
Clonality:	Polyclonal
Conjugate:	This LNPEP antibody is un-conjugated
Application:	Western Blotting (WB), Flow Cytometry (FACS), Immunohistochemistry (Paraffin-embedded Sections) (IHC (p))

Product Details

Immunogen:	This LNPEP antibody is generated from rabbits immunized with a KLH conjugated synthetic peptide between 23-52 amino acids from the N-terminal region of human LNPEP.
Clone:	RB27638
Isotype:	Ig Fraction
Predicted Reactivity:	M, Rat
Purification:	This antibody is purified through a protein A column, followed by peptide affinity purification.

Target Details

Target:	LNPEP
---------	-------

Target Details

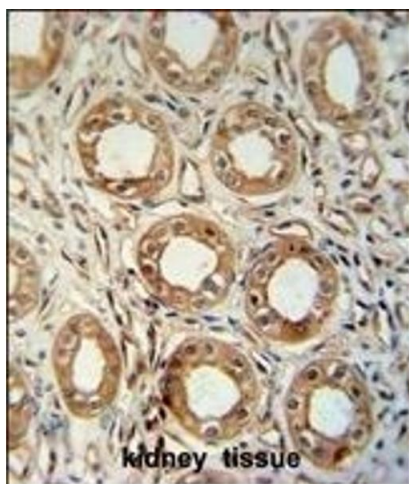
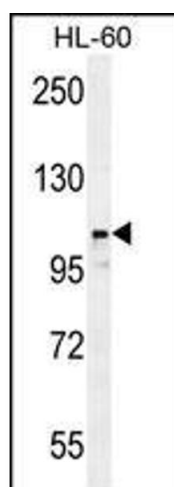
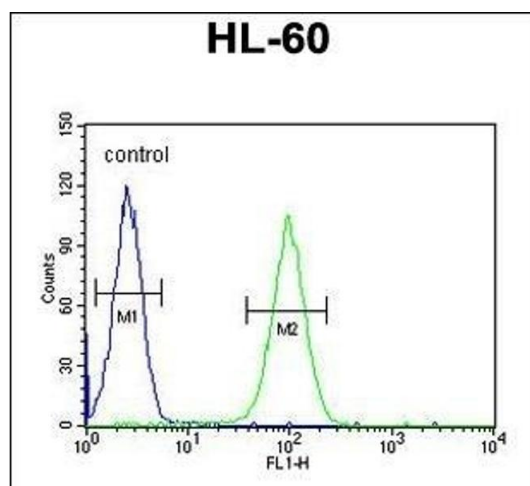
Alternative Name:	LNPEP (LNPEP Products)
Background:	This gene encodes a zinc-dependent aminopeptidase that cleaves vasopressin, oxytocin, lys-bradykinin, met-enkephalin, dynorphin A and other peptide hormones. The protein can be secreted in maternal serum, reside in intracellular vesicles with the insulin-responsive glucose transporter GLUT4, or form a type II integral membrane glycoprotein. The protein catalyzes the final step in the conversion of angiotensinogen to angiotensin IV (AT4) and is also a receptor for AT4. Alternative splicing results in multiple transcript variants encoding different isoforms. [provided by RefSeq].
Molecular Weight:	117349
Gene ID:	4012
NCBI Accession:	NP_005566 , NP_787116
UniProt:	Q9UIQ6
Pathways:	Regulation of long-term Neuronal Synaptic Plasticity

Application Details

Application Notes:	WB: 1:1000. IHC-P: 1:50~100. FC: 1:10~50
Restrictions:	For Research Use only

Handling

Format:	Liquid
Buffer:	Purified polyclonal antibody supplied in PBS with 0.09 % (W/V) sodium azide.
Preservative:	Sodium azide
Precaution of Use:	This product contains Sodium azide: a POISONOUS AND HAZARDOUS SUBSTANCE which should be handled by trained staff only.
Storage:	4 °C, -20 °C
Storage Comment:	Maintain refrigerated at 2-8 °C for up to 6 months. For long term storage store at -20 °C in small aliquots to prevent freeze-thaw cycles.
Expiry Date:	6 months



Flow Cytometry

Image 1. LNPEP Antibody (N-Term) (ABIN654230 and ABIN2844064) flow cytometric analysis of HL-60 cells (right histogram) compared to a negative control (left histogram). FITC-conjugated goat-anti-rabbit secondary antibodies were used for the analysis.

Western Blotting

Image 2. LNPEP Antibody (N-Term) (ABIN654230 and ABIN2844064) western blot analysis in HL-60 cell line lysates (35 μ g/lane). This demonstrates the LNPEP antibody detected the LNPEP protein (arrow).

Immunohistochemistry (Paraffin-embedded Sections)

Image 3. LNPEP antibody (N-Term) (ABIN654230 and ABIN2844064) immunohistochemistry analysis in formalin fixed and paraffin embedded human kidney tissue followed by peroxidase conjugation of the secondary antibody and DAB staining. This data demonstrates the use of the LNPEP antibody (N-Term) for immunohistochemistry. Clinical relevance has not been evaluated.