

Datasheet for ABIN654231
anti-SLC25A12 antibody (N-Term)

2 Images

[Go to Product page](#)

Overview

Quantity:	400 µL
Target:	SLC25A12 (Slc25a12)
Binding Specificity:	AA 1-30, N-Term
Reactivity:	Human, Mouse
Host:	Rabbit
Clonality:	Polyclonal
Conjugate:	This SLC25A12 antibody is un-conjugated
Application:	Western Blotting (WB), Immunohistochemistry (Paraffin-embedded Sections) (IHC (p))

Product Details

Immunogen:	This SLC25A12 antibody is generated from rabbits immunized with a KLH conjugated synthetic peptide between 1-30 amino acids from the N-terminal region of human SLC25A12.
Clone:	RB27641
Isotype:	Ig Fraction
Purification:	This antibody is purified through a protein A column, followed by peptide affinity purification.

Target Details

Target:	SLC25A12 (Slc25a12)
Alternative Name:	SLC25A12 (Slc25a12 Products)
Background:	This gene encodes a calcium-binding mitochondrial carrier protein. The encoded protein

Target Details

localizes to the mitochondria and is involved in the exchange of aspartate for glutamate across the inner mitochondrial membrane. Polymorphisms in the gene encoding this protein may be associated with risk of autism. [provided by RefSeq].

Molecular Weight: 74762

Gene ID: 8604

NCBI Accession: [NP_003696](#)

UniProt: [O75746](#)

Pathways: [Ribonucleoside Biosynthetic Process](#), [Dicarboxylic Acid Transport](#)

Application Details

Application Notes: WB: 1:1000. IHC-P: 1:50~100

Restrictions: For Research Use only

Handling

Format: Liquid

Buffer: Purified polyclonal antibody supplied in PBS with 0.09 % (W/V) sodium azide.

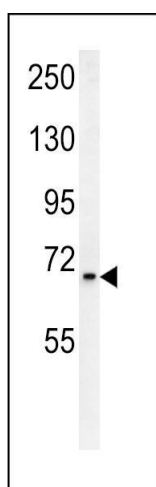
Preservative: Sodium azide

Precaution of Use: This product contains Sodium azide: a POISONOUS AND HAZARDOUS SUBSTANCE which should be handled by trained staff only.

Storage: 4 °C,-20 °C

Storage Comment: Maintain refrigerated at 2-8 °C for up to 6 months. For long term storage store at -20 °C in small aliquots to prevent freeze-thaw cycles.

Expiry Date: 6 months



Immunohistochemistry (Paraffin-embedded Sections)

Image 1. SLC25A12 antibody (N-Term) (ABIN654231 and ABIN2844065) immunohistochemistry analysis in formalin fixed and paraffin embedded human skeletal muscle followed by peroxidase conjugation of the secondary antibody and DAB staining. This data demonstrates the use of the SLC25A12 antibody (N-Term) for immunohistochemistry. Clinical relevance has not been evaluated.

Western Blotting

Image 2. SLC25A12 Antibody (N-Term) (ABIN654231 and ABIN2844065) western blot analysis in mouse bladder tissue lysates (15 µg/lane). This demonstrates the SLC25A12 antibody detected SLC25A12 protein (arrow).