

Datasheet for ABIN654237  
**anti-KLF14 antibody (C-Term)**[Go to Product page](#)

## 2 Images

## Overview

Quantity:	400 µL
Target:	KLF14
Binding Specificity:	AA 254-283, C-Term
Reactivity:	Human, Mouse
Host:	Rabbit
Clonality:	Polyclonal
Conjugate:	This KLF14 antibody is un-conjugated
Application:	Western Blotting (WB), Flow Cytometry (FACS)

## Product Details

Immunogen:	This KLF14 antibody is generated from rabbits immunized with a KLH conjugated synthetic peptide between 254-283 amino acids from the C-terminal region of human KLF14.
Clone:	RB27698
Isotype:	Ig Fraction
Purification:	This antibody is purified through a protein A column, followed by peptide affinity purification.

## Target Details

Target:	KLF14
Alternative Name:	KLF14 ( <a href="#">KLF14 Products</a> )
Background:	This gene encodes a member of the Kruppel-like family of transcription factors. The gene

## Target Details

exhibits imprinted expression from the maternal allele in embryonic and extra-embryonic tissues. Expression of this gene is induced by TGF-beta, and the protein represses TGF-beta receptor II expression. The protein functions as part of a transcriptional co-repressor complex that also contains the transcriptional regulator SIN3A and histone deacetylase 2.

Molecular Weight: 33094

Gene ID: 136259

UniProt: [Q8TD94](#)

## Application Details

Application Notes: WB: 1:1000. FC: 1:10~50

Restrictions: For Research Use only

## Handling

Format: Liquid

Buffer: Purified polyclonal antibody supplied in PBS with 0.09 % (W/V) sodium azide.

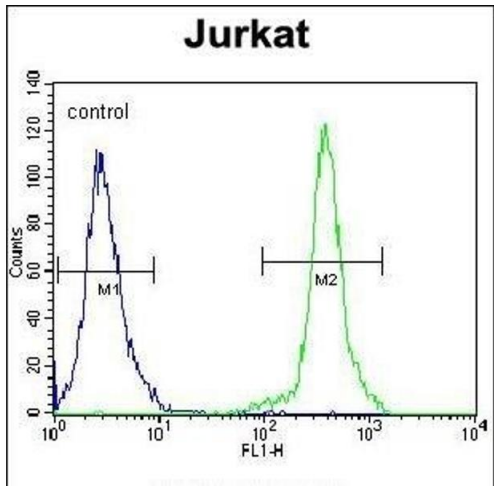
Preservative: Sodium azide

Precaution of Use: This product contains Sodium azide: a POISONOUS AND HAZARDOUS SUBSTANCE which should be handled by trained staff only.

Storage: 4 °C, -20 °C

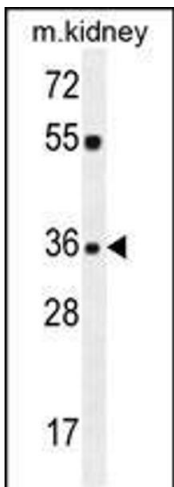
Storage Comment: Maintain refrigerated at 2-8 °C for up to 6 months. For long term storage store at -20 °C in small aliquots to prevent freeze-thaw cycles.

Expiry Date: 6 months



Flow Cytometry

**Image 1.** KLF14 Antibody (C-term) (ABIN654237 and ABIN2844068) flow cytometric analysis of Jurkat cells (right histogram) compared to a negative control cell (left histogram).FITC-conjugated goat-anti-rabbit secondary antibodies were used for the analysis.



Western Blotting

**Image 2.** KLF14 Antibody (C-term) (ABIN654237 and ABIN2844068) western blot analysis in mouse kidney tissue lysates (35 µg/lane).This demonstrates the KLF14 antibody detected the KLF14 protein (arrow).