

Datasheet for ABIN654245  
**anti-NAT14 antibody (N-Term)**[Go to Product page](#)

## 2 Images

## Overview

Quantity:	400 µL
Target:	NAT14
Binding Specificity:	AA 5-33, N-Term
Reactivity:	Human
Host:	Rabbit
Clonality:	Polyclonal
Conjugate:	This NAT14 antibody is un-conjugated
Application:	Western Blotting (WB), Immunohistochemistry (Paraffin-embedded Sections) (IHC (p))

## Product Details

Immunogen:	This NAT14 antibody is generated from rabbits immunized with a KLH conjugated synthetic peptide between 5-33 amino acids from the N-terminal region of human NAT14.
Clone:	RB27764
Isotype:	Ig Fraction
Predicted Reactivity:	B, Pr, M
Purification:	This antibody is purified through a protein A column, followed by peptide affinity purification.

## Target Details

Target:	NAT14
Alternative Name:	NAT14 ( <a href="#">NAT14 Products</a> )

## Target Details

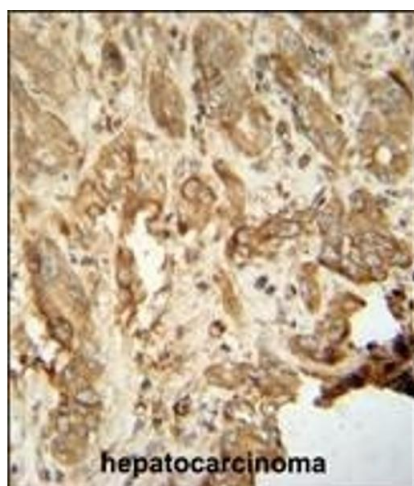
Molecular Weight:	21650
Gene ID:	57106
NCBI Accession:	<a href="#">NP_065111</a>
UniProt:	<a href="#">Q8WUY8</a>
Pathways:	<a href="#">SARS-CoV-2 Protein Interactome</a>

## Application Details

Application Notes:	WB: 1:1000. IHC-P: 1:50~100
Restrictions:	For Research Use only

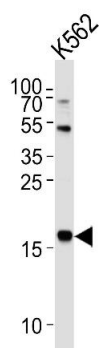
## Handling

Format:	Liquid
Buffer:	Purified polyclonal antibody supplied in PBS with 0.09 % (W/V) sodium azide.
Preservative:	Sodium azide
Precaution of Use:	This product contains Sodium azide: a POISONOUS AND HAZARDOUS SUBSTANCE which should be handled by trained staff only.
Storage:	4 °C,-20 °C
Storage Comment:	Maintain refrigerated at 2-8 °C for up to 6 months. For long term storage store at -20 °C in small aliquots to prevent freeze-thaw cycles.
Expiry Date:	6 months



#### Immunohistochemistry (Paraffin-embedded Sections)

**Image 1.** NAT14 antibody (N-term) (ABIN654245 and ABIN2844071) immunohistochemistry analysis in formalin fixed and paraffin embedded human hepatocarcinoma followed by peroxidase conjugation of the secondary antibody and DAB staining. This data demonstrates the use of the NAT14 antibody (N-term) for immunohistochemistry. Clinical relevance has not been evaluated.



#### Western Blotting

**Image 2.** Western blot analysis of lysate from K562 cell line, using NAT14 Antibody (N-term) (ABIN654245 and ABIN2844071). (ABIN654245 and ABIN2844071) was diluted at 1:1000 at each lane. A goat anti-rabbit IgG H&L(HRP) at 1:5000 dilution was used as the secondary antibody. Lysate at 35 µg per lane.