

Datasheet for ABIN654246
anti-PDE12 antibody (C-Term)[Go to Product page](#)

2 Images

Overview

Quantity:	400 µL
Target:	PDE12
Binding Specificity:	AA 362-390, C-Term
Reactivity:	Human
Host:	Rabbit
Clonality:	Polyclonal
Conjugate:	This PDE12 antibody is un-conjugated
Application:	Western Blotting (WB), Flow Cytometry (FACS)

Product Details

Immunogen:	This PDE12 antibody is generated from rabbits immunized with a KLH conjugated synthetic peptide between 362-390 amino acids from the C-terminal region of human PDE12.
Clone:	RB27765
Isotype:	Ig Fraction
Predicted Reactivity:	B, M, Rat
Purification:	This antibody is purified through a protein A column, followed by peptide affinity purification.

Target Details

Target:	PDE12
Alternative Name:	PDE12 (PDE12 Products)

Target Details

Molecular Weight:	67352
Gene ID:	201626
NCBI Accession:	NP_808881
UniProt:	Q6L8Q7

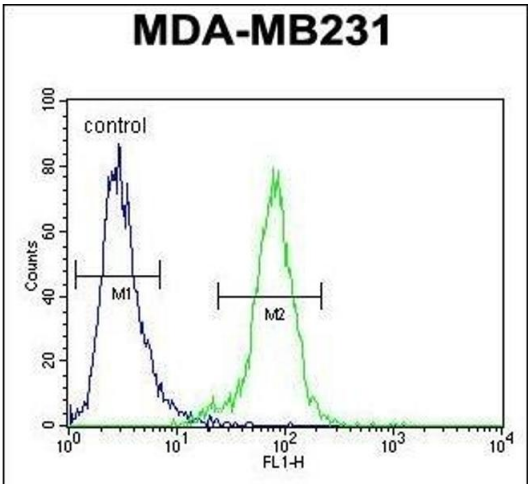
Application Details

Application Notes:	WB: 1:1000. FC: 1:10~50
Restrictions:	For Research Use only

Handling

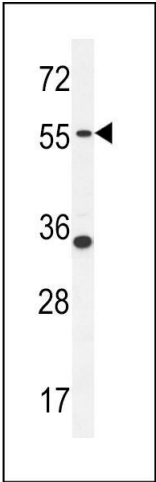
Format:	Liquid
Buffer:	Purified polyclonal antibody supplied in PBS with 0.09 % (W/V) sodium azide.
Preservative:	Sodium azide
Precaution of Use:	This product contains Sodium azide: a POISONOUS AND HAZARDOUS SUBSTANCE which should be handled by trained staff only.
Storage:	4 °C,-20 °C
Storage Comment:	Maintain refrigerated at 2-8 °C for up to 6 months. For long term storage store at -20 °C in small aliquots to prevent freeze-thaw cycles.
Expiry Date:	6 months

Validation report #104401 for Cleavage Under Targets and Release Using Nuclease (CUT&RUN)



Flow Cytometry

Image 1. PDE12 Antibody (C-term) (ABIN654246 and ABIN2844072) flow cytometric analysis of MDA-M cells (right histogram) compared to a negative control cell (left histogram).FITC-conjugated goat-anti-rabbit secondary antibodies were used for the analysis.



Western Blotting

Image 2. PDE12 Antibody (C-term) (ABIN654246 and ABIN2844072) western blot analysis in MDA-M cell line lysates (35 µg/lane). This demonstrates the PDE12 antibody detected the PDE12 protein (arrow).