



[Go to Product page](#)

Datasheet for ABIN654253

anti-BRMS1L antibody (N-Term)

1 Image

Overview

Quantity:	400 µL
Target:	BRMS1L
Binding Specificity:	AA 1-30, N-Term
Reactivity:	Human, Mouse
Host:	Rabbit
Clonality:	Polyclonal
Conjugate:	This BRMS1L antibody is un-conjugated
Application:	Western Blotting (WB)

Product Details

Immunogen:	This BRMS1L antibody is generated from rabbits immunized with a KLH conjugated synthetic peptide between 1-30 amino acids from the N-terminal region of human BRMS1L.
Clone:	RB27800
Isotype:	Ig Fraction
Predicted Reactivity:	B
Purification:	This antibody is purified through a protein A column, followed by peptide affinity purification.

Target Details

Target:	BRMS1L
Alternative Name:	BRMS1L (BRMS1L Products)

Target Details

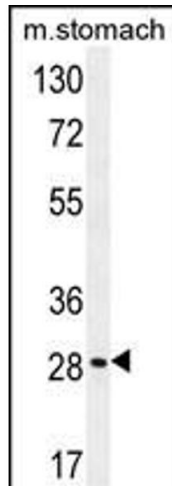
Background:	The protein encoded by this gene shows sequence similarity to the human breast carcinoma metastasis suppressor (BRMS1) protein and the mammalian Sds3 (suppressor of defective silencing 3) proteins. This protein is a component of the mSin3a family of histone deacetylase complexes (HDAC).
Molecular Weight:	37629
Gene ID:	84312
NCBI Accession:	NP_115728
UniProt:	Q5PSV4

Application Details

Application Notes:	WB: 1:1000
Restrictions:	For Research Use only

Handling

Format:	Liquid
Buffer:	Purified polyclonal antibody supplied in PBS with 0.09 % (W/V) sodium azide.
Preservative:	Sodium azide
Precaution of Use:	This product contains Sodium azide: a POISONOUS AND HAZARDOUS SUBSTANCE which should be handled by trained staff only.
Storage:	4 °C,-20 °C
Storage Comment:	Maintain refrigerated at 2-8 °C for up to 6 months. For long term storage store at -20 °C in small aliquots to prevent freeze-thaw cycles.
Expiry Date:	6 months



Western Blotting

Image 1. BRMS1L Antibody (N-term) (ABIN654253 and ABIN2844074) western blot analysis in mouse stomach tissue lysates (35 µg/lane). This demonstrates the BRMS1L antibody detected the BRMS1L protein (arrow).