

Datasheet for ABIN654255
anti-RILPL1 antibody (C-Term)



[Go to Product page](#)

2 Images

Overview

Quantity:	400 µL
Target:	RILPL1
Binding Specificity:	AA 337-366, C-Term
Reactivity:	Human, Mouse
Host:	Rabbit
Clonality:	Polyclonal
Conjugate:	This RILPL1 antibody is un-conjugated
Application:	Western Blotting (WB), Immunohistochemistry (Paraffin-embedded Sections) (IHC (p))

Product Details

Immunogen:	This RILPL1 antibody is generated from rabbits immunized with a KLH conjugated synthetic peptide between 337-366 amino acids from the C-terminal region of human RILPL1.
Clone:	RB27803
Isotype:	Ig Fraction
Predicted Reactivity:	B, X
Purification:	This antibody is purified through a protein A column, followed by peptide affinity purification.

Target Details

Target:	RILPL1
Alternative Name:	RILPL1 (RILPL1 Products)

Target Details

Molecular Weight:	47108
Gene ID:	353116
NCBI Accession:	NP_847884
UniProt:	Q5EBL4

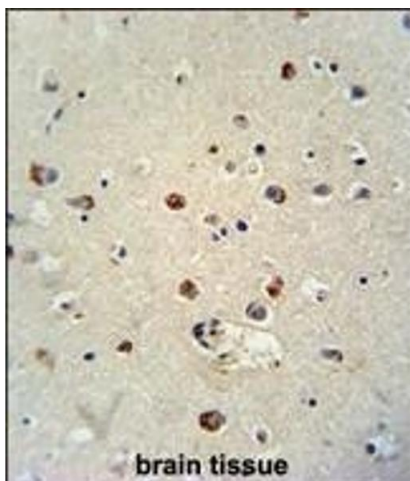
Application Details

Application Notes:	WB: 1:1000. IHC-P: 1:50~100
Restrictions:	For Research Use only

Handling

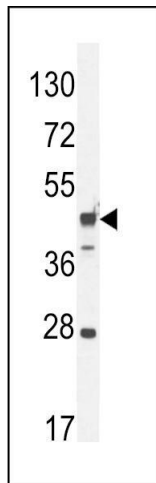
Format:	Liquid
Buffer:	Purified polyclonal antibody supplied in PBS with 0.09 % (W/V) sodium azide.
Preservative:	Sodium azide
Precaution of Use:	This product contains Sodium azide: a POISONOUS AND HAZARDOUS SUBSTANCE which should be handled by trained staff only.
Storage:	4 °C,-20 °C
Storage Comment:	Maintain refrigerated at 2-8 °C for up to 6 months. For long term storage store at -20 °C in small aliquots to prevent freeze-thaw cycles.
Expiry Date:	6 months

Images



Immunohistochemistry (Paraffin-embedded Sections)

Image 1. RILPL1 antibody (C-term) (ABIN654255 and ABIN2844075) immunohistochemistry analysis in formalin fixed and paraffin embedded human brain tissue followed by peroxidase conjugation of the secondary antibody and DAB staining. This data demonstrates the use of the RILPL1 antibody (C-term) for immunohistochemistry. Clinical relevance has not been evaluated.



Western Blotting

Image 2. RILPL1 Antibody (C-term) (ABIN654255 and ABIN2844075) western blot analysis in mouse heart tissue lysates (35 µg/lane). This demonstrates the RILPL1 antibody detected the RILPL1 protein (arrow).