



[Go to Product page](#)

Datasheet for ABIN654273

## anti-ZDHHC1 antibody (N-Term)

### 2 Images

#### Overview

Quantity:	400 µL
Target:	ZDHHC1
Binding Specificity:	AA 14-43, N-Term
Reactivity:	Human, Mouse
Host:	Rabbit
Clonality:	Polyclonal
Conjugate:	This ZDHHC1 antibody is un-conjugated
Application:	Western Blotting (WB)

#### Product Details

Immunogen:	This ZDHHC1 antibody is generated from rabbits immunized with a KLH conjugated synthetic peptide between 14-43 amino acids from the N-terminal region of human ZDHHC1.
Clone:	RB27847
Isotype:	Ig Fraction
Purification:	This antibody is purified through a protein A column, followed by peptide affinity purification.

#### Target Details

Target:	ZDHHC1
Alternative Name:	ZDHHC1 ( <a href="#">ZDHHC1 Products</a> )
Molecular Weight:	54818

## Target Details

Gene ID: 29800

NCBI Accession: [NP\\_037436](#)

UniProt: [Q8WTX9](#)

## Application Details

Application Notes: WB: 1:1000. WB: 1:1000

Restrictions: For Research Use only

## Handling

Format: Liquid

Buffer: Purified polyclonal antibody supplied in PBS with 0.09 % (W/V) sodium azide.

Preservative: Sodium azide

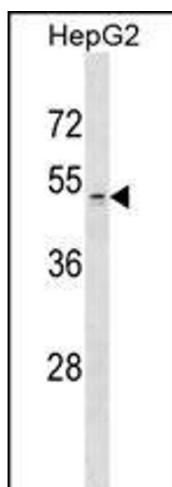
Precaution of Use: This product contains Sodium azide: a POISONOUS AND HAZARDOUS SUBSTANCE which should be handled by trained staff only.

Storage: 4 °C,-20 °C

Storage Comment: Maintain refrigerated at 2-8 °C for up to 6 months. For long term storage store at -20 °C in small aliquots to prevent freeze-thaw cycles.

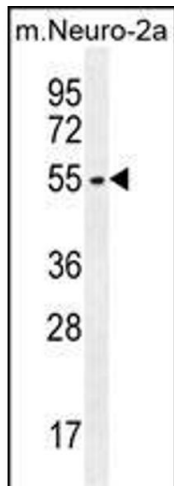
Expiry Date: 6 months

## Images



### Western Blotting

**Image 1.** ZDHHC1 Antibody (N-term) (ABIN654273 and ABIN2844082) western blot analysis in HepG2 cell line lysates (35 µg/lane). This demonstrates the ZDHHC1 antibody detected the ZDHHC1 protein (arrow).



### Western Blotting

**Image 2.** ZDHHC1 Antibody (N-term) (ABIN654273 and ABIN2844082) western blot analysis in mouse Neuro-2a cell line lysates (35 µg/lane). This demonstrates the ZDHHC1 antibody detected the ZDHHC1 protein (arrow).